



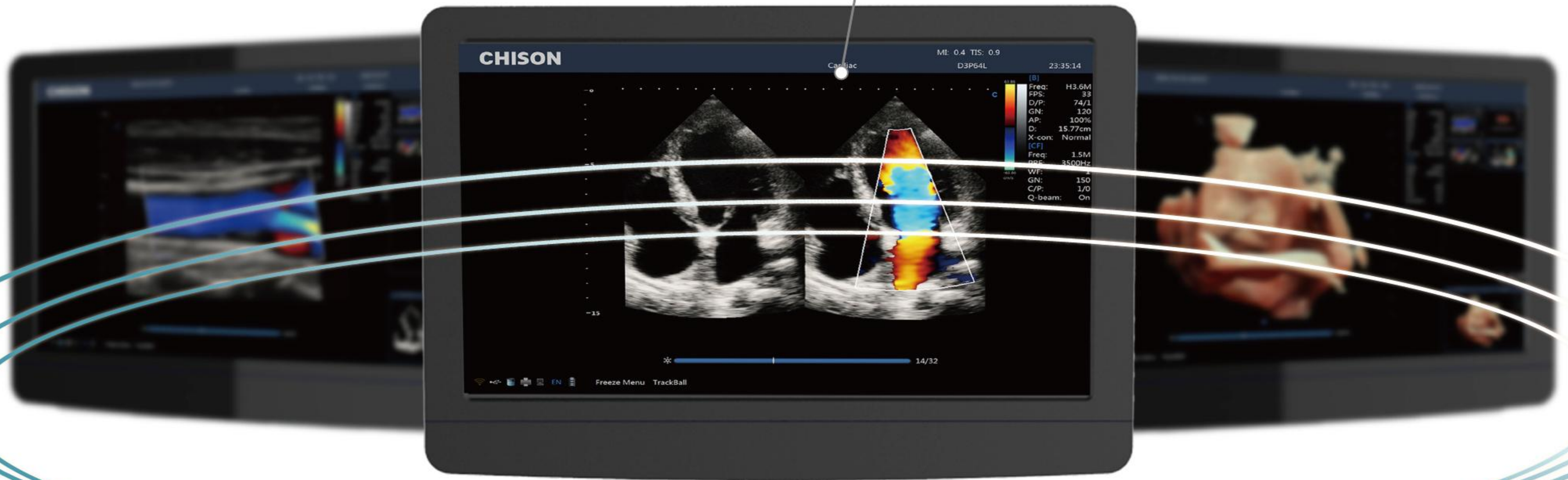
CBit 6 *PRO*

Experts within Touch



Industry-leading Design

21.5 inch HD LED monitor
Rotatable: $\pm 90^\circ$



Gel warmer(optional)
Temperature adjustable



Elegant Control Panel

Dedicated video printer socket

Facing front CD/DVD recorder

Built-in Battery (optional)



Four probe connectors



Smart Standby Mode

- Smart backstage management enables extended battery life
- Instant power-on



Dual-screen display for better view

Easy to slide

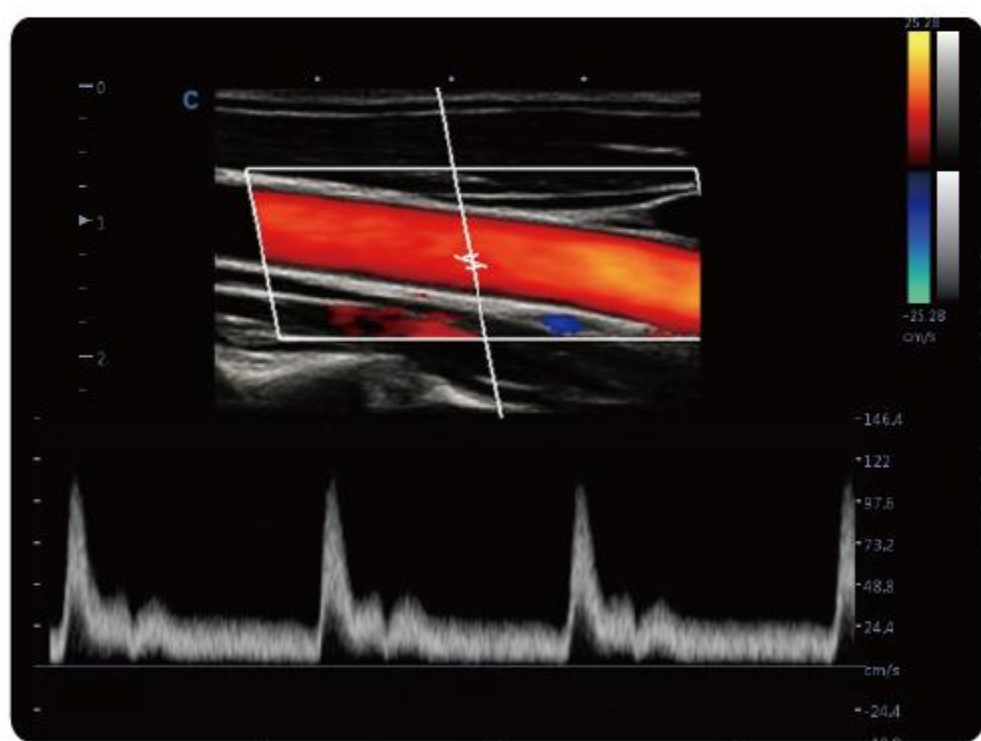
DUAL
SCREEN
DISPLAY

SUPERIOR WORKFLOW



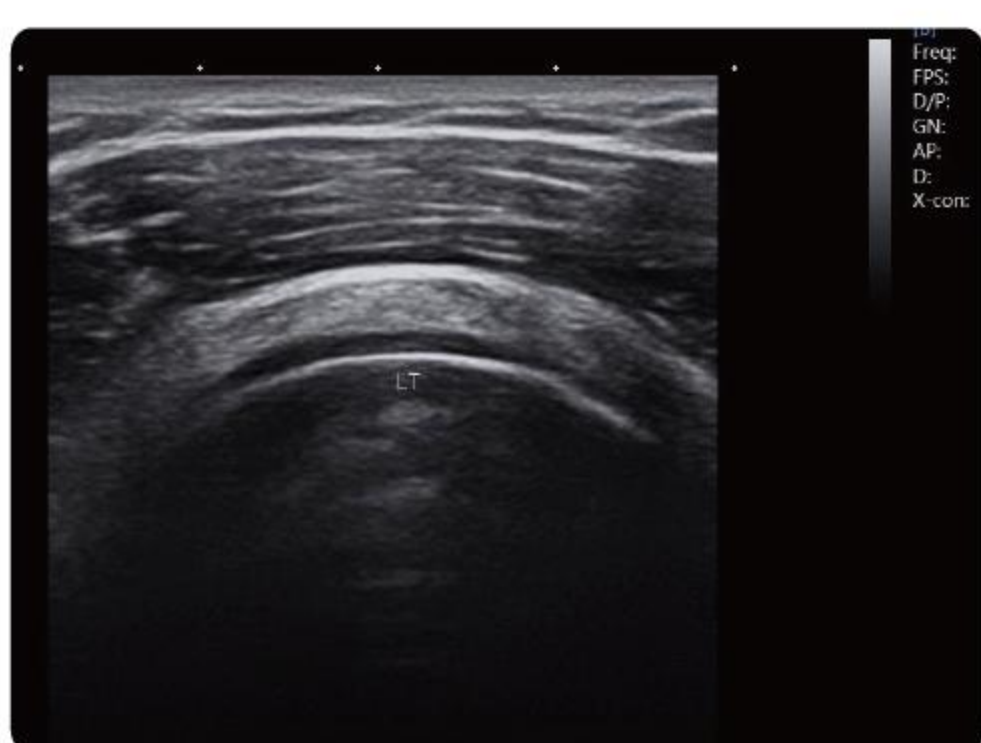
▶ Intelligent Focus

- Automatically detect the focus position according to the depth
- Focus on the interesting area to improve the quality
- Efficient and intelligent



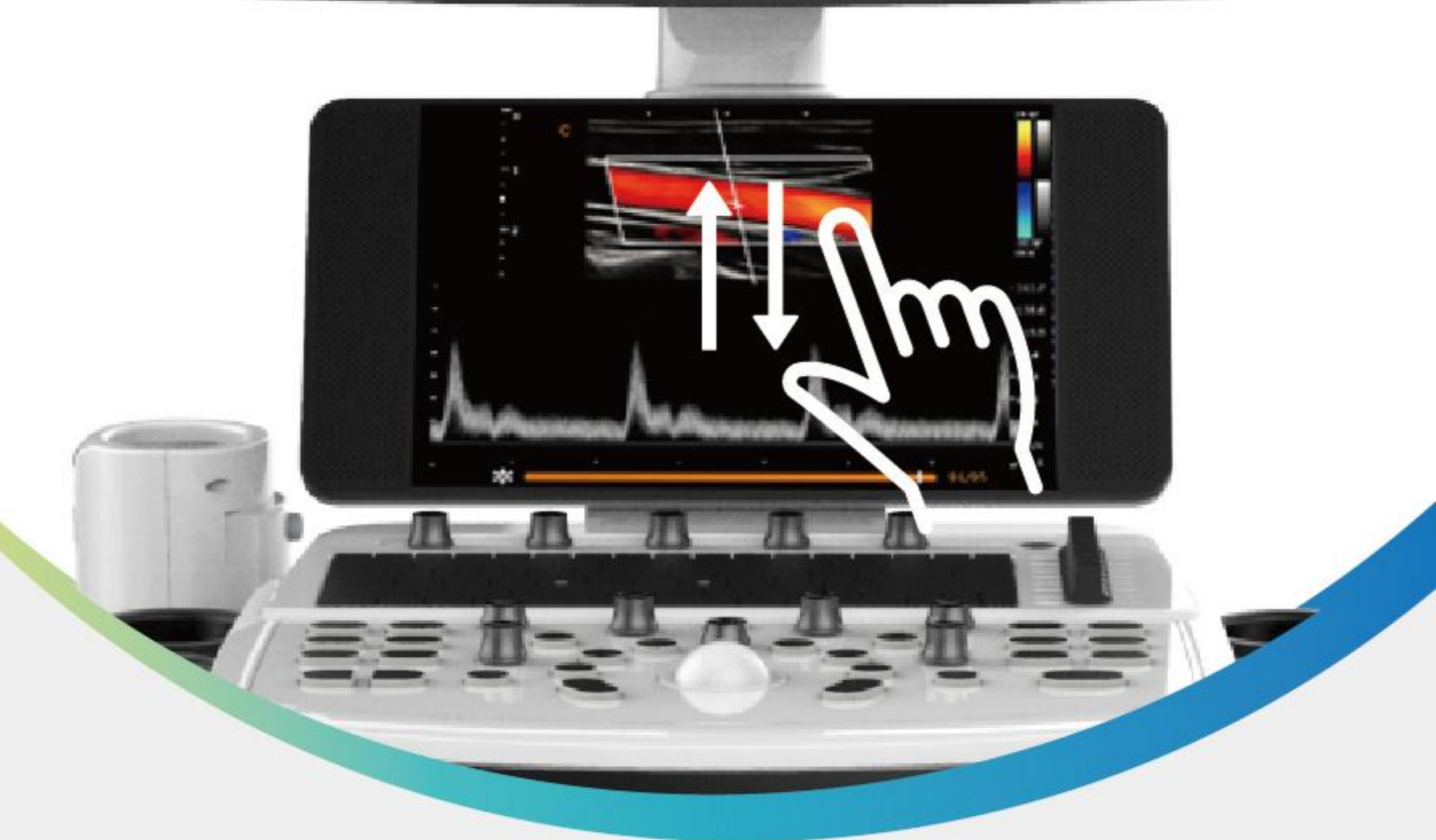
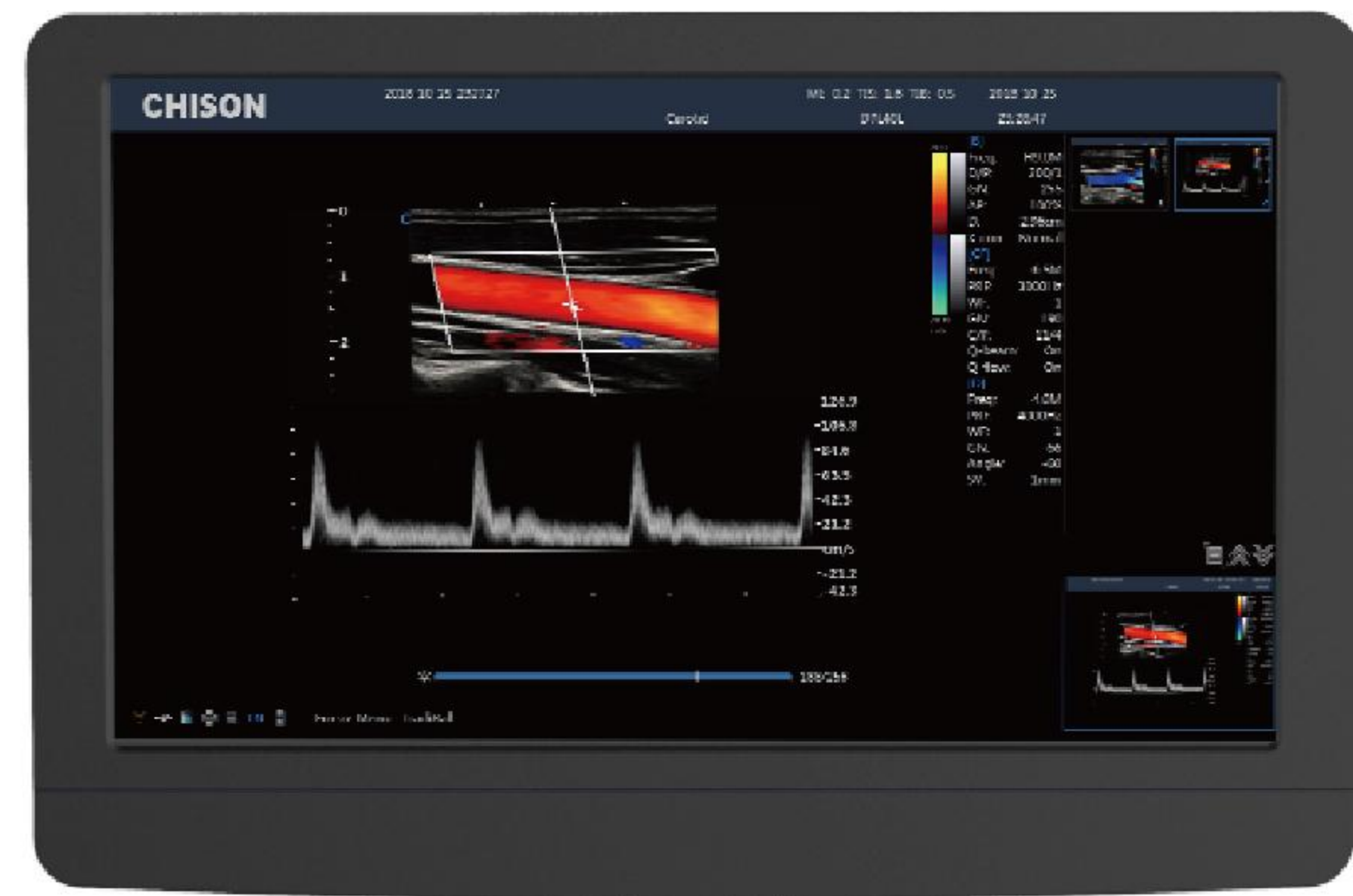
▶ Intelligent Doppler (Optional)

- Automatically adjust the ROI direction and PFR in color mode and doppler gate in PW mode
- Saving time , Efficiency
- Much easier for the sonographer



▶ Raw data

- Provide the freedom to perform image adjustments
- Speedy scanning time, save the processing time
- Efficiency and fast



21.5 inch HD LED monitor



- 90% image area
- full screen function , deliver the large image

10.1 inch HD touch panel

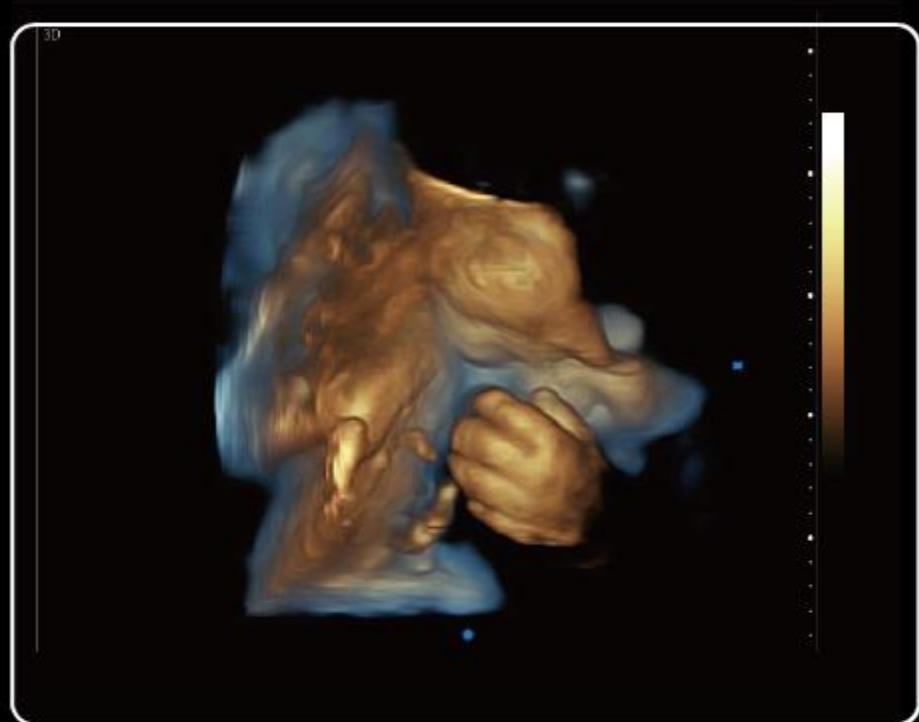


- Super responsive
- Ergonomic tilting ensures all-dimensional, multi-angle visualization
- Customized layout, just one-touch operation ease of use.

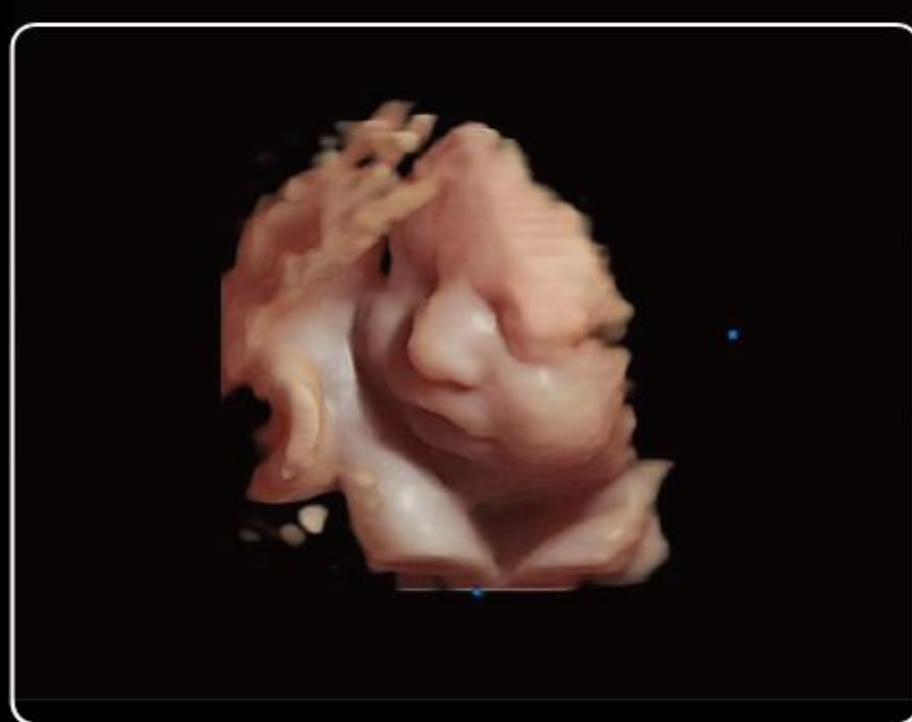
Advanced Tools for Optimized Healthcare



4D



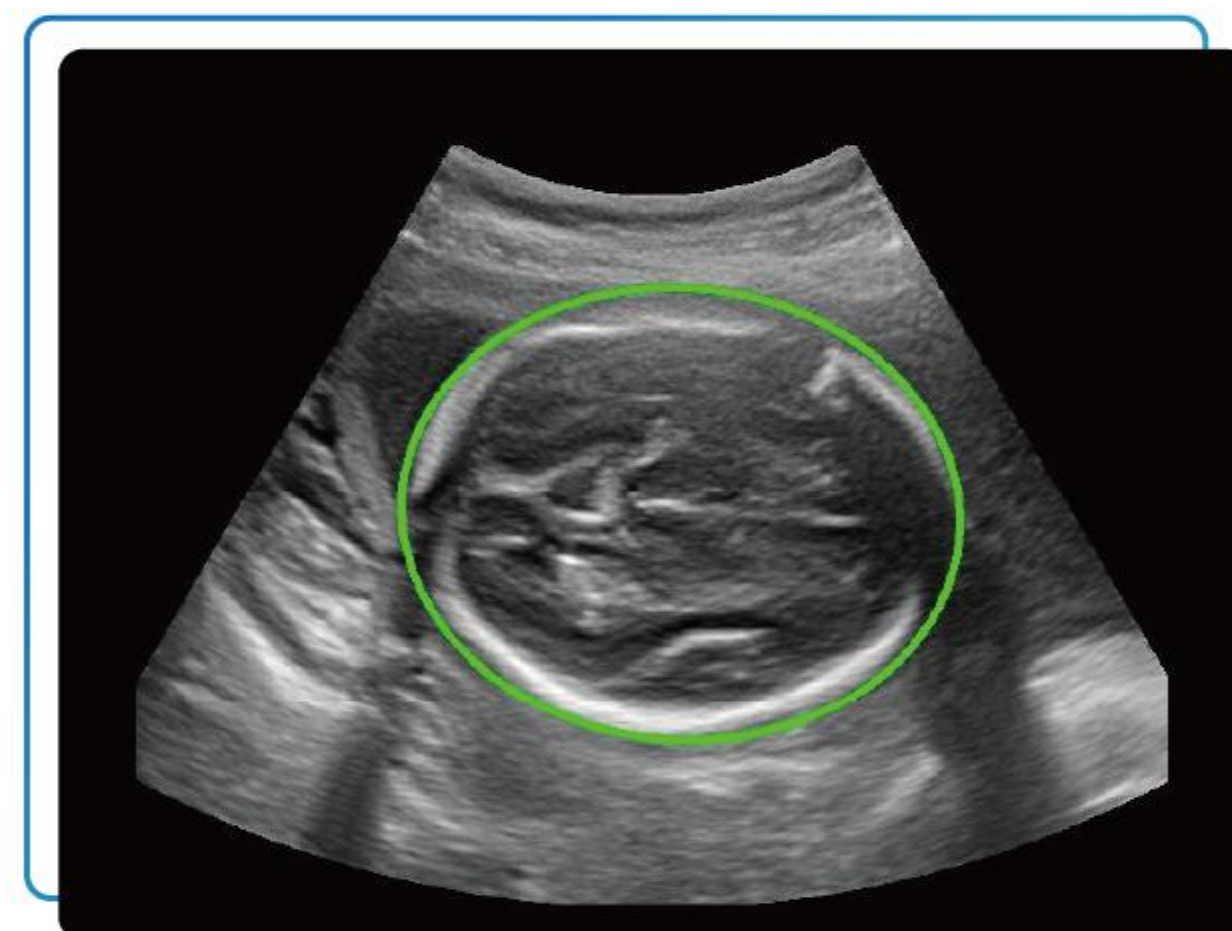
Depth View



Virtual HD

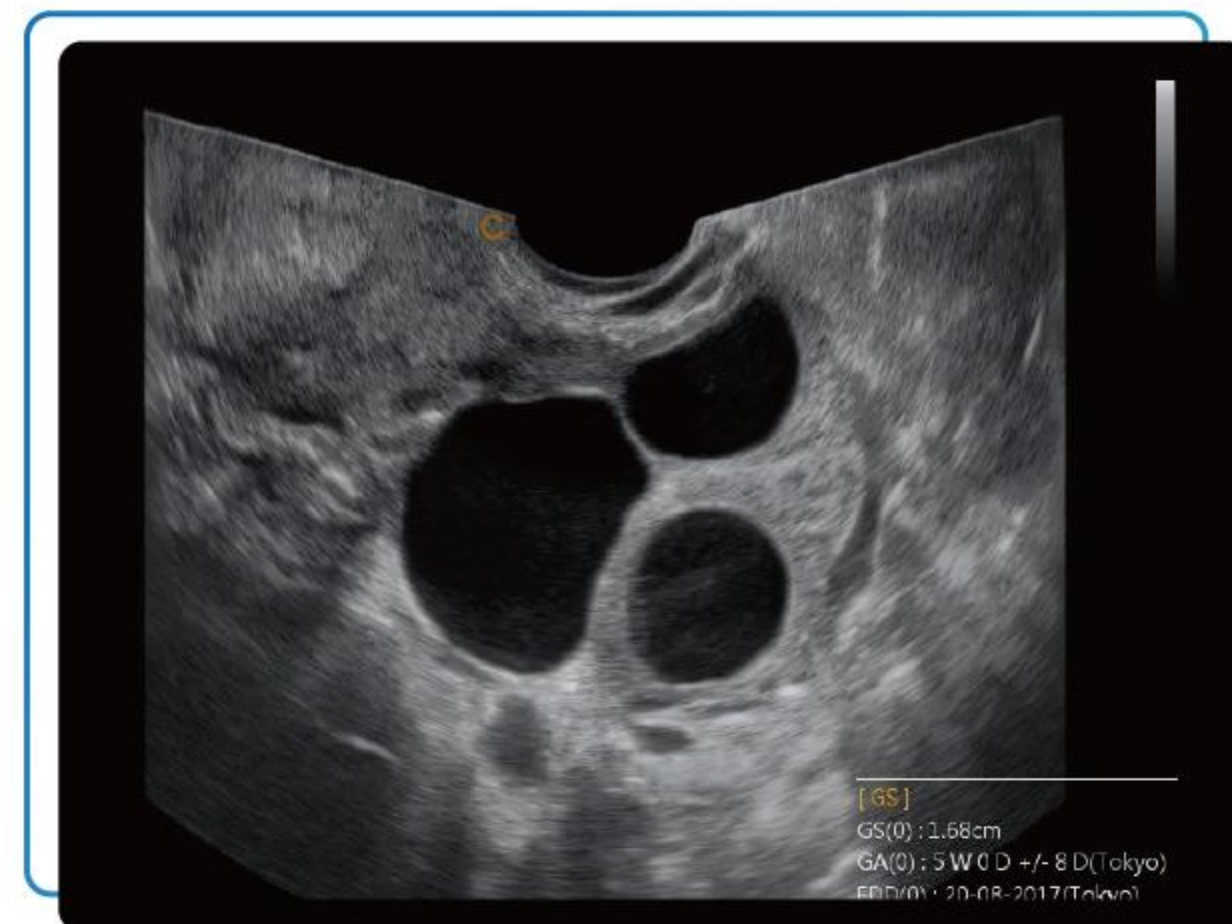
▶ SonoAI - OB

- Intelligent software for OB, High efficiency and precise measurement tools
- Automatically measure: BPD, HC, AC, FL, NT
- One step to obtain the result



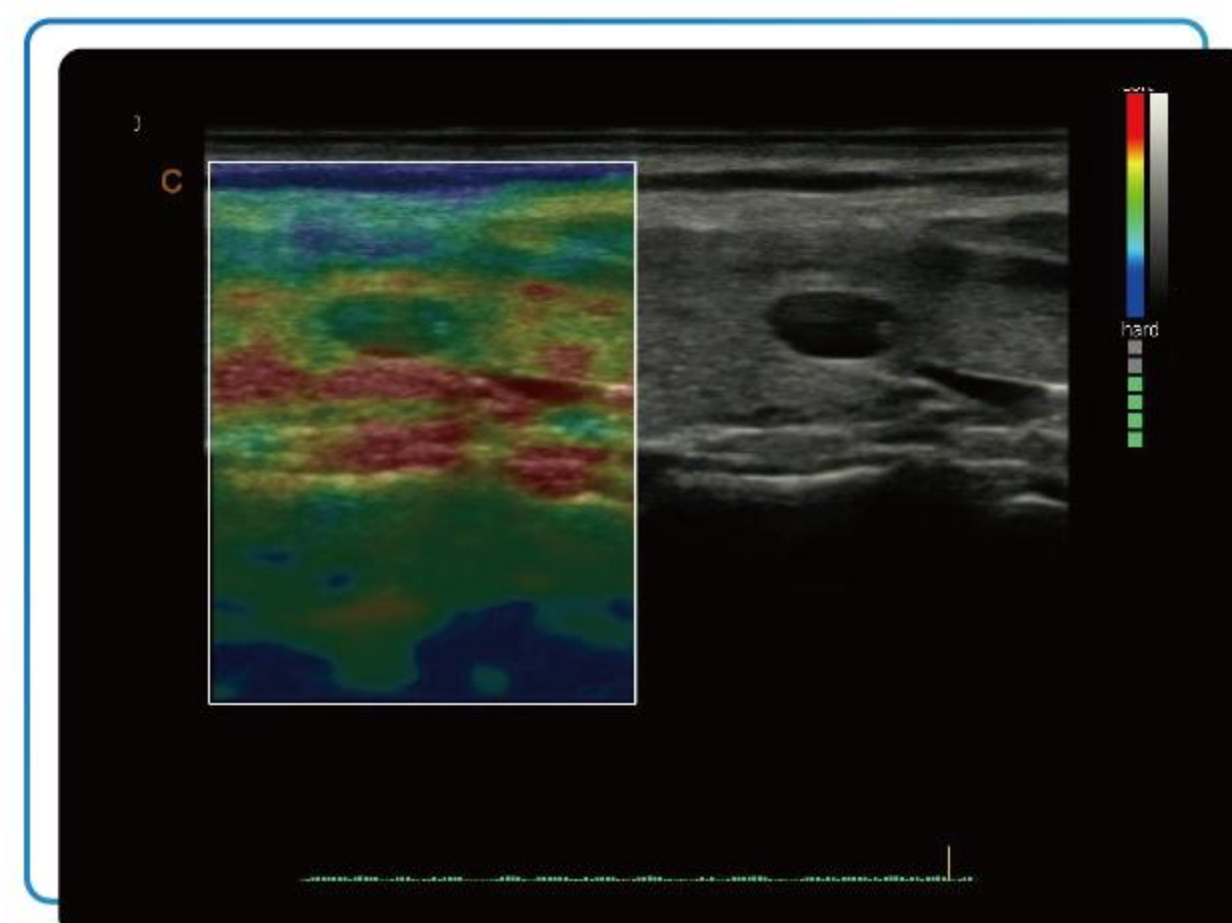
▶ Wide angle TV probe

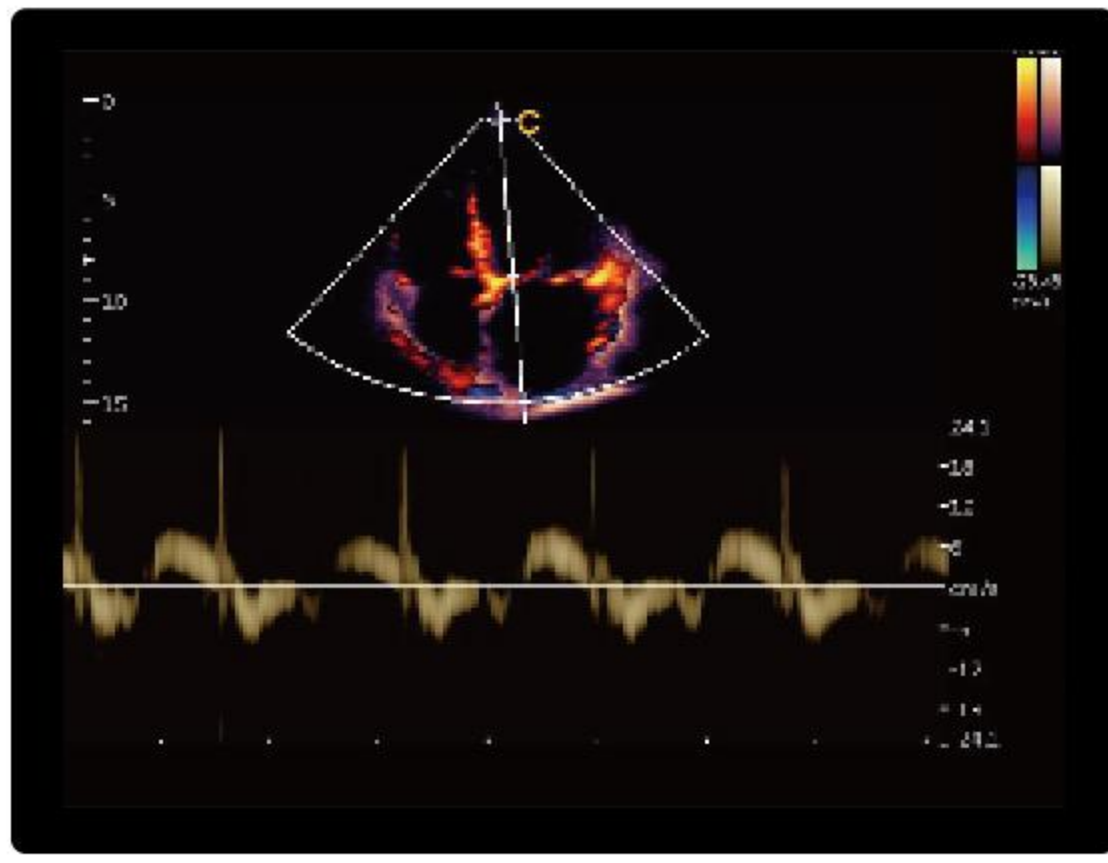
- Around to 210° extremely wide angle
- Provide more diagnostic information
- Save time, improve the efficiency



▶ Quantitative Elastography

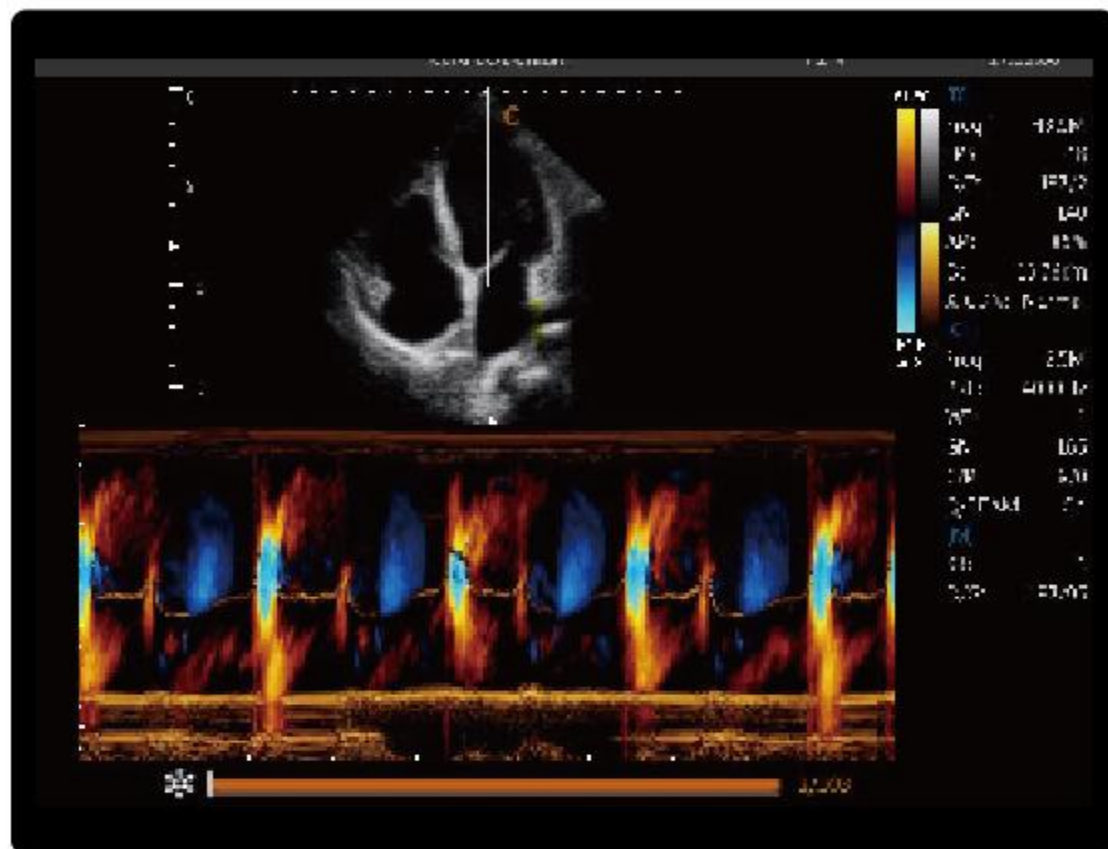
- Display the elasticity of different tissues in different color
- Provide more clinical information, especially for breast tumor, thyroid, liver and prostate
- Strain ratio measurement quantitatively gives the ratio between the average strain of the selected region and of the nearby normal tissue region.
- Available on versatile transducers.





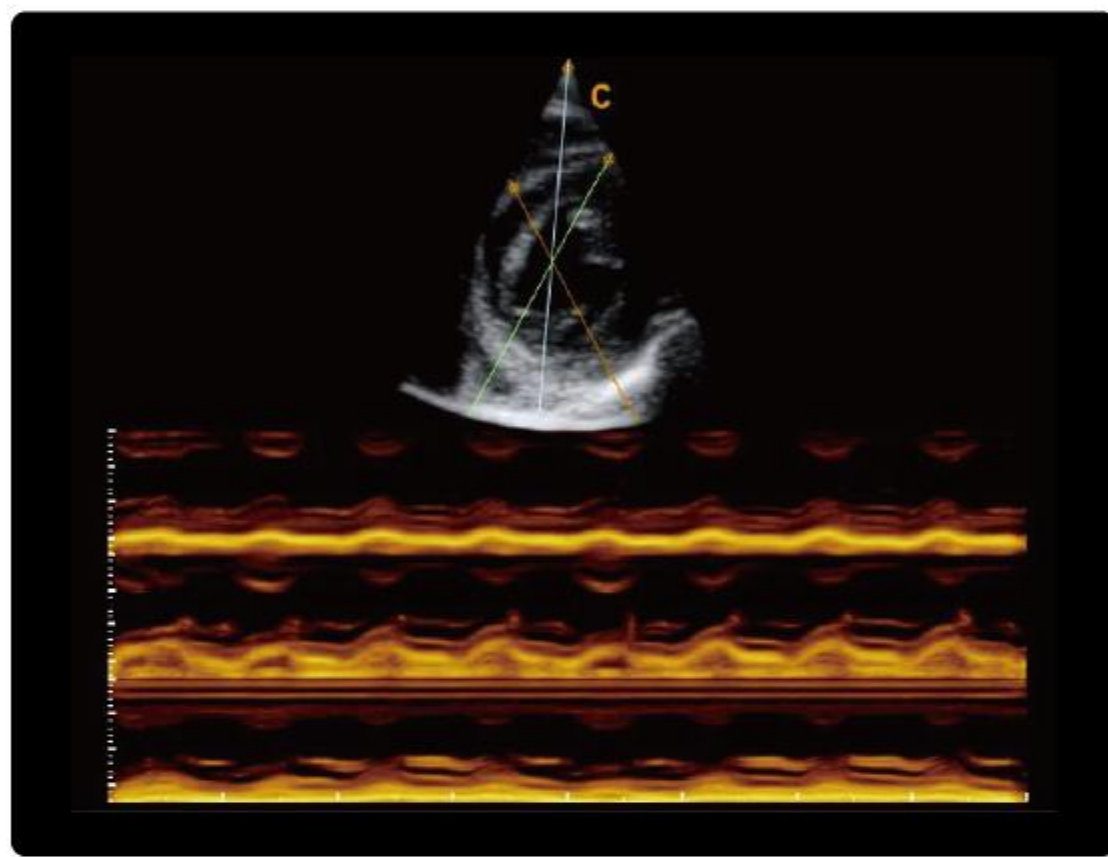
TDI

- Tissue Doppler imaging is a novel echocardiography technique that directly measures myocardial velocity.
- Systolic TD measurements assess left and right ventricular myocardial contractile function. Diastolic TD values reflect myocardial relaxation.



Color M Mode

- Provide cardiac movement information efficiently
- Display corresponding blood flow direction information
- Easy to detect regurgitation

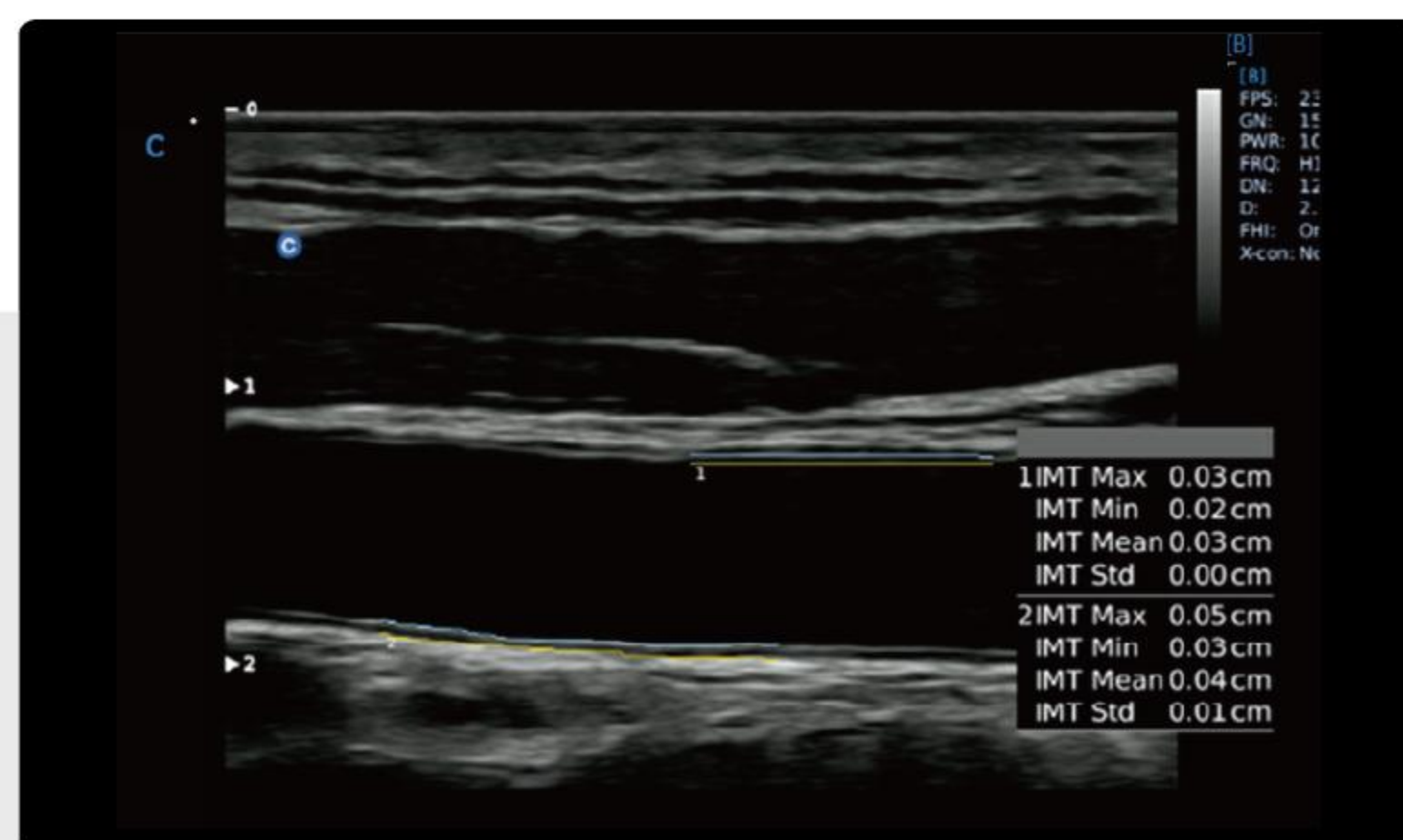
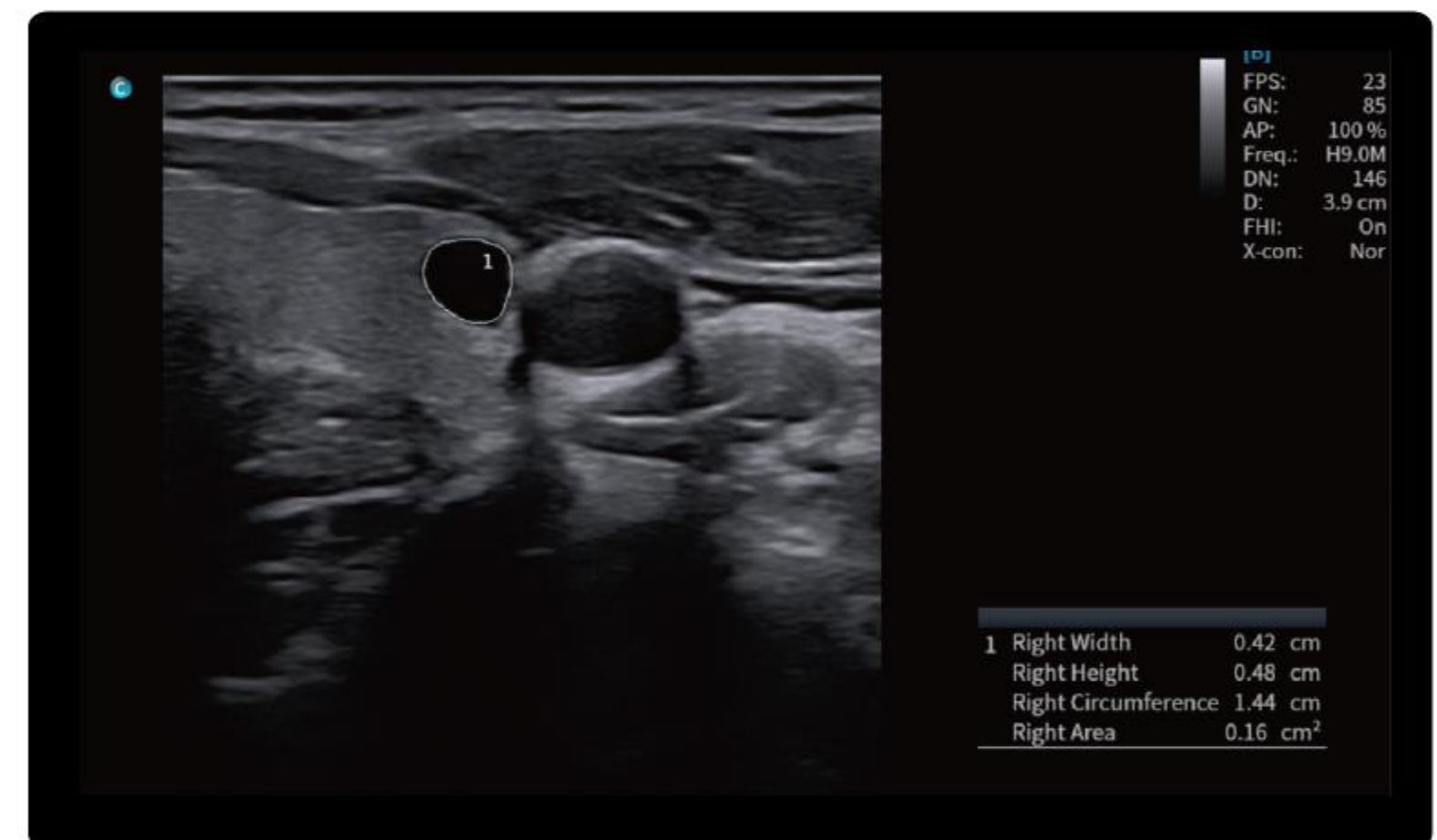


Free Steering M Mode

- Obtain accurate cardiac function analysis data.
- Obtain accurate cardiac measurement parameters of any section and any Angle
- Excellent and convenient for difficult patient examination

Auto Thyroid

- Automatically locates and traces the thyroid Cyst
- Automatic measures the size, area and perimeter



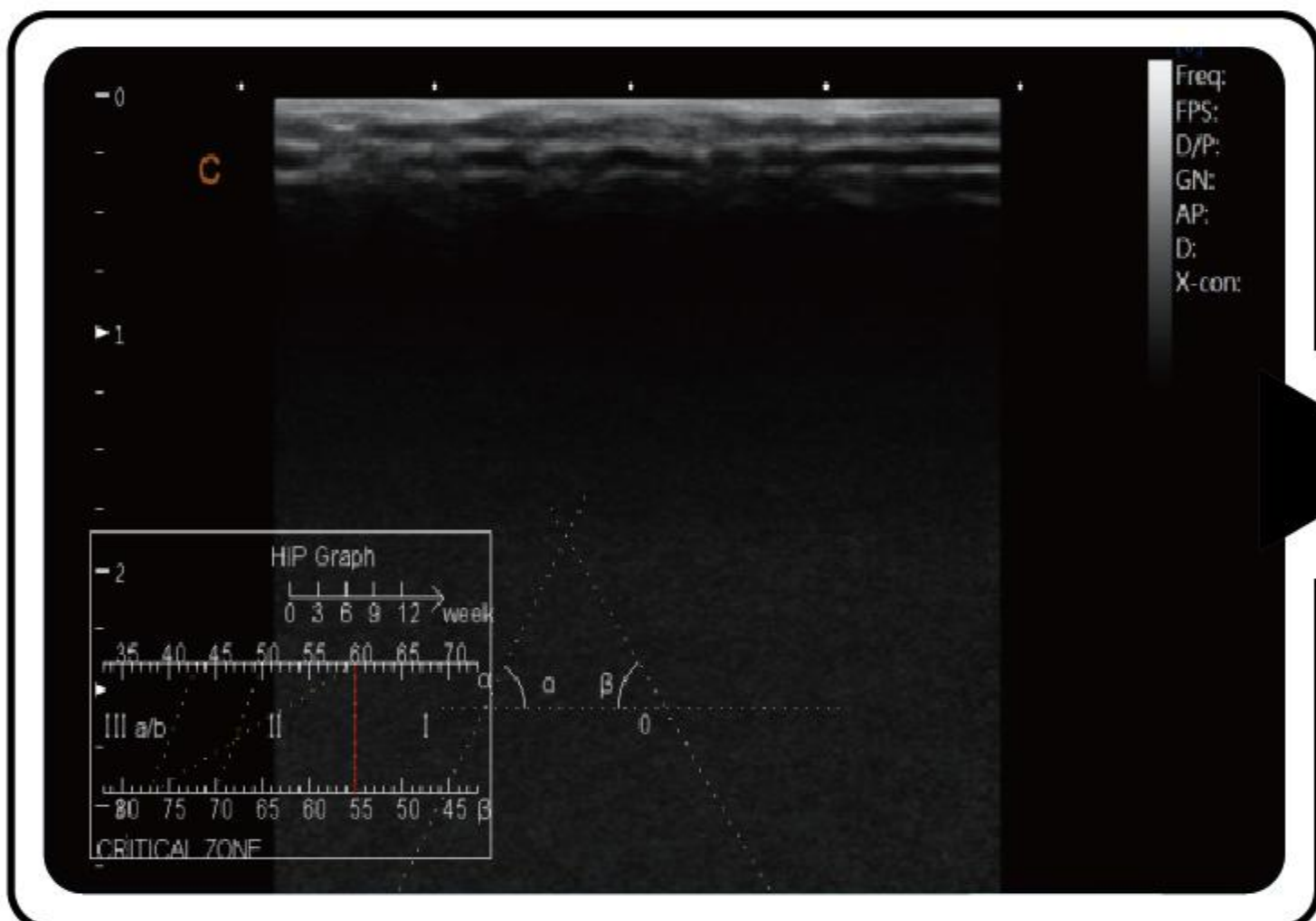
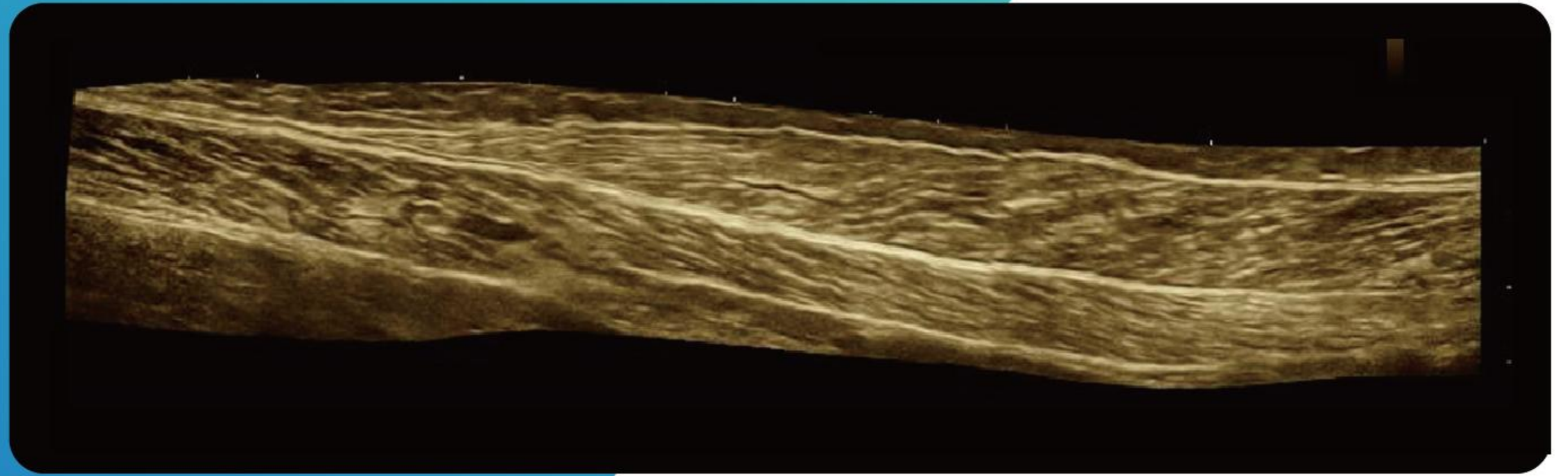
Auto IMT

- Automatically traces the intima, and measures the thickness of the intima. This allows you to measure the intima faster, more easily and more accurately.



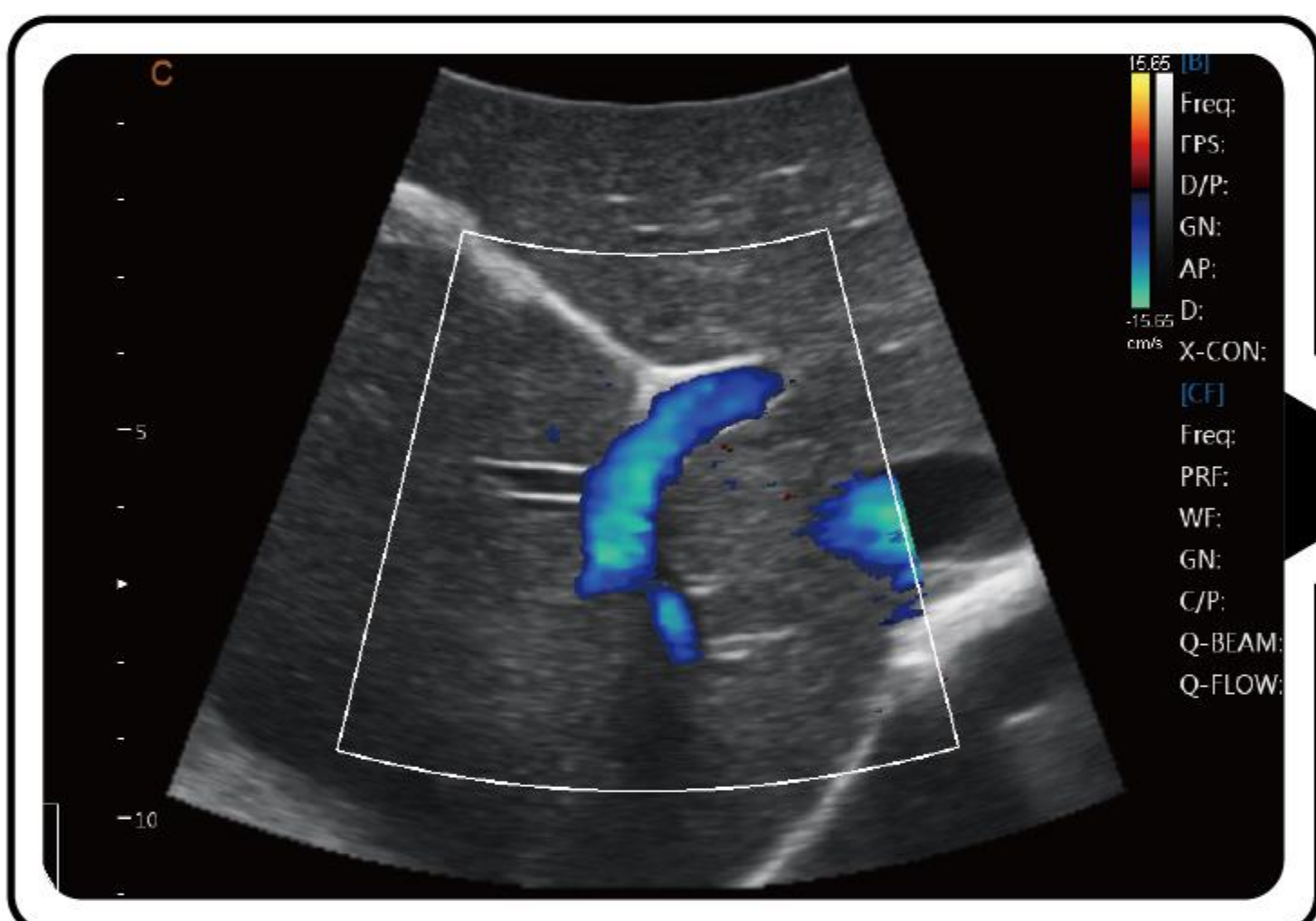


Real Time Panoramic ▶



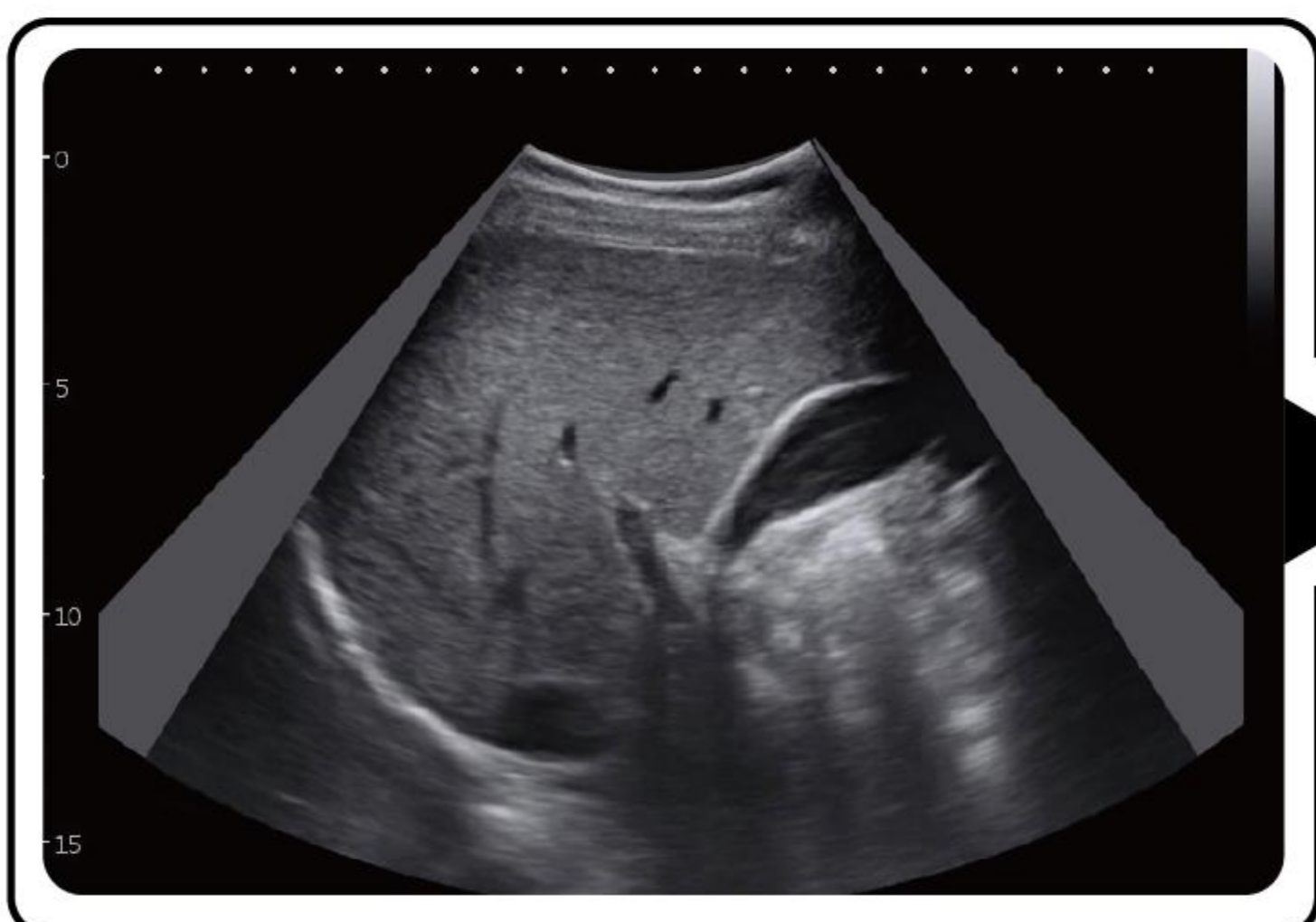
HIP Graf

- Use a graph for hip orthotics diagnosis, help clinicians to give a easier and more accurate diagnoses during the pediatric hip scanning.
- Different angles indicate different level of hip deformity, which is easier and more obvious to see with the aid of the graph. (I, II, D, IIIa, IIIb).



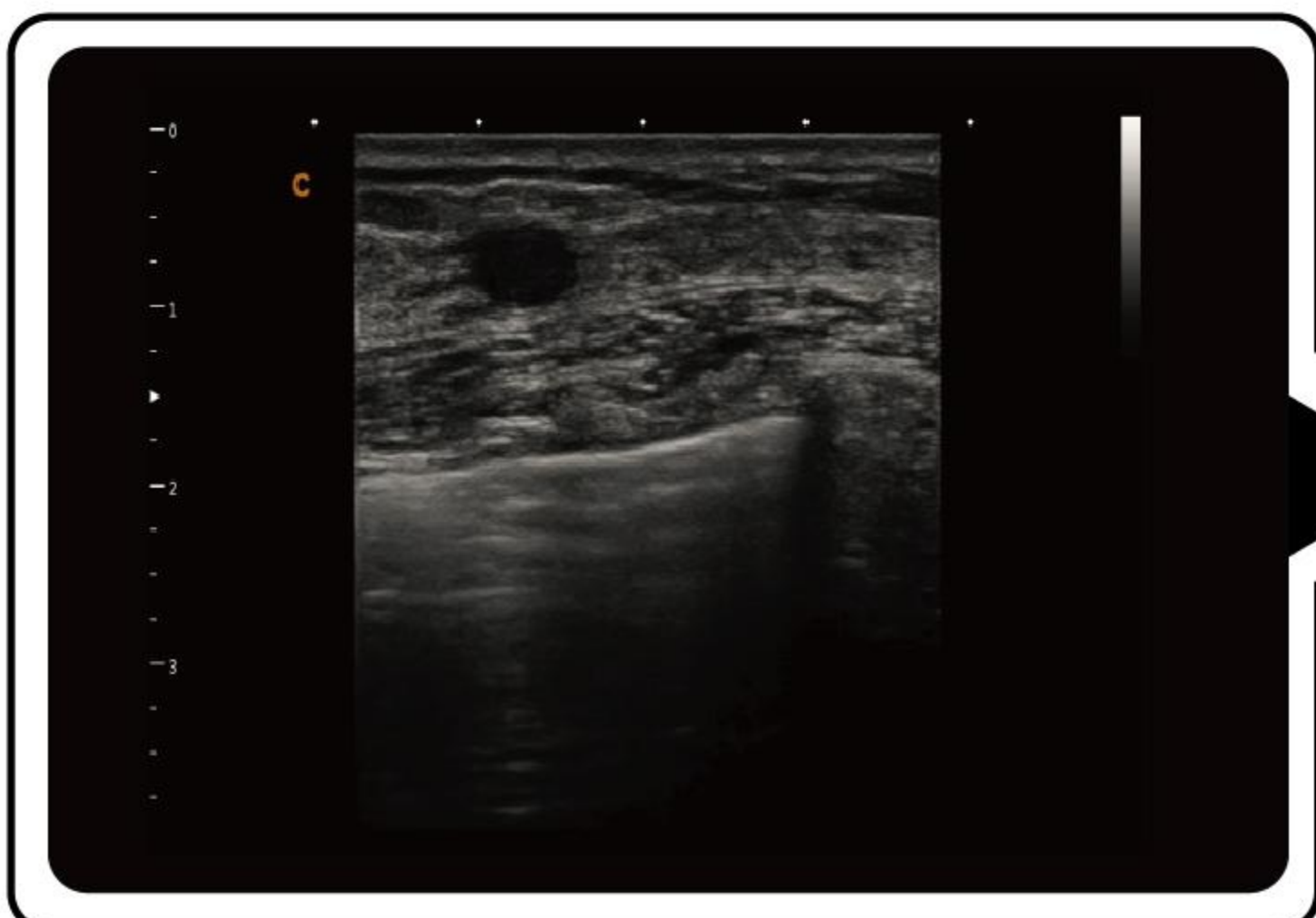
HD CZoom

- Zoom the color information , remain the high resolution.
- Important for the small vessel blood information detection, especially for the fetal heart diagnosis.



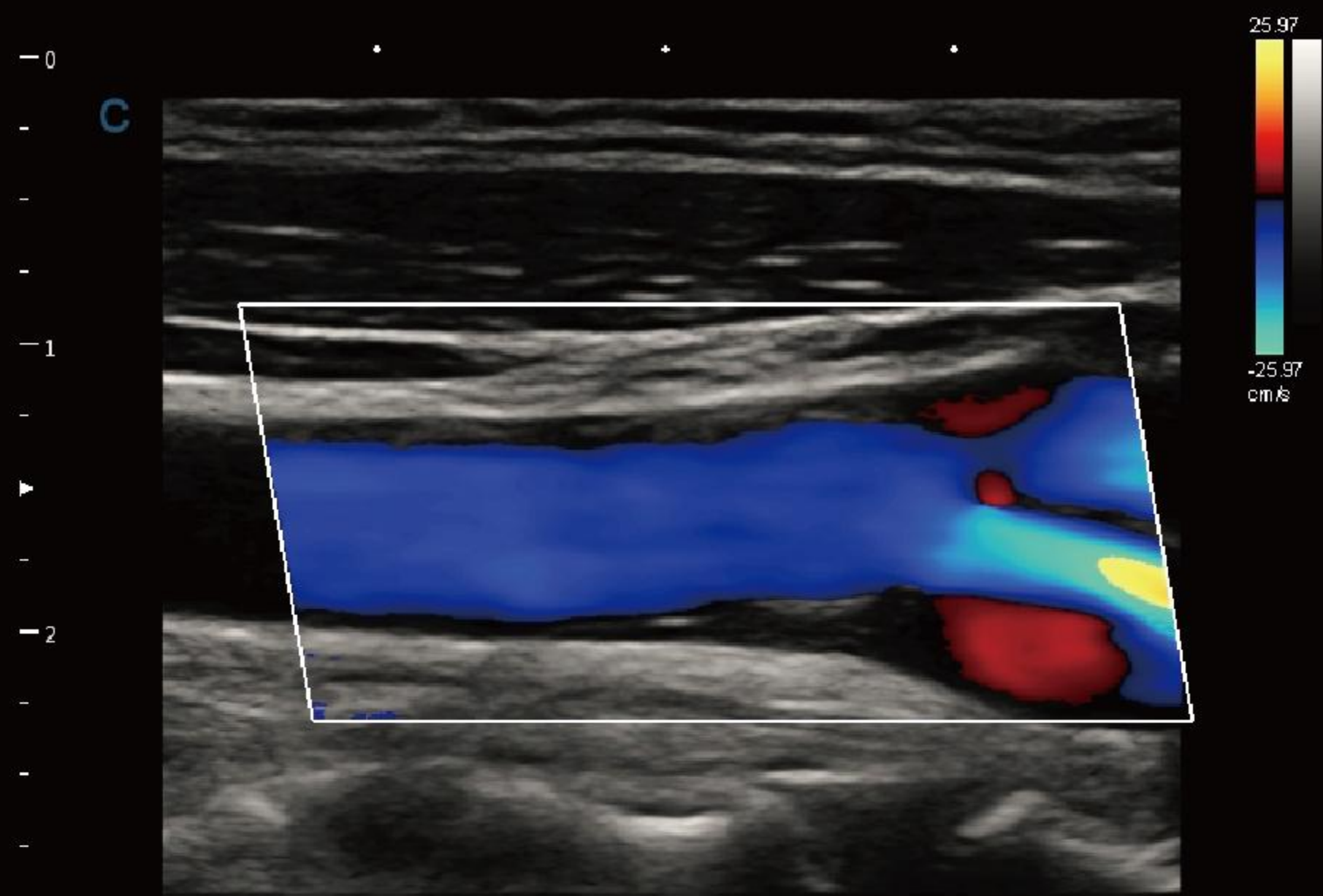
Curved Expanding

- Enlarge the scanning area in convex probe , same as convex trapezoid
- Better for the big organ display, especially liver, kidney through the rib space

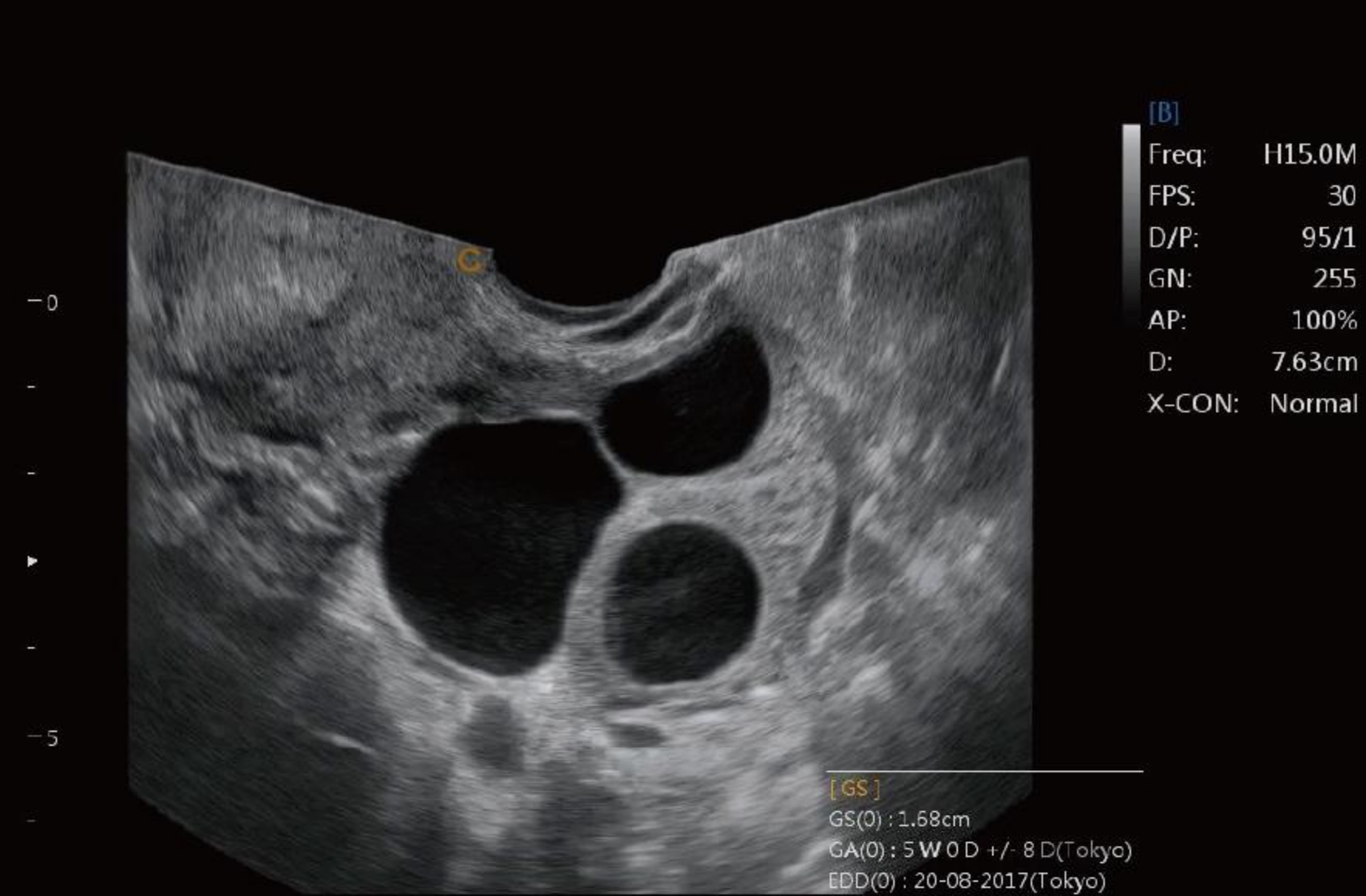


Auto Breast Lesion Detection

- Automatically detect breast lesion
- Provide the size
- Efficient for the diagnose



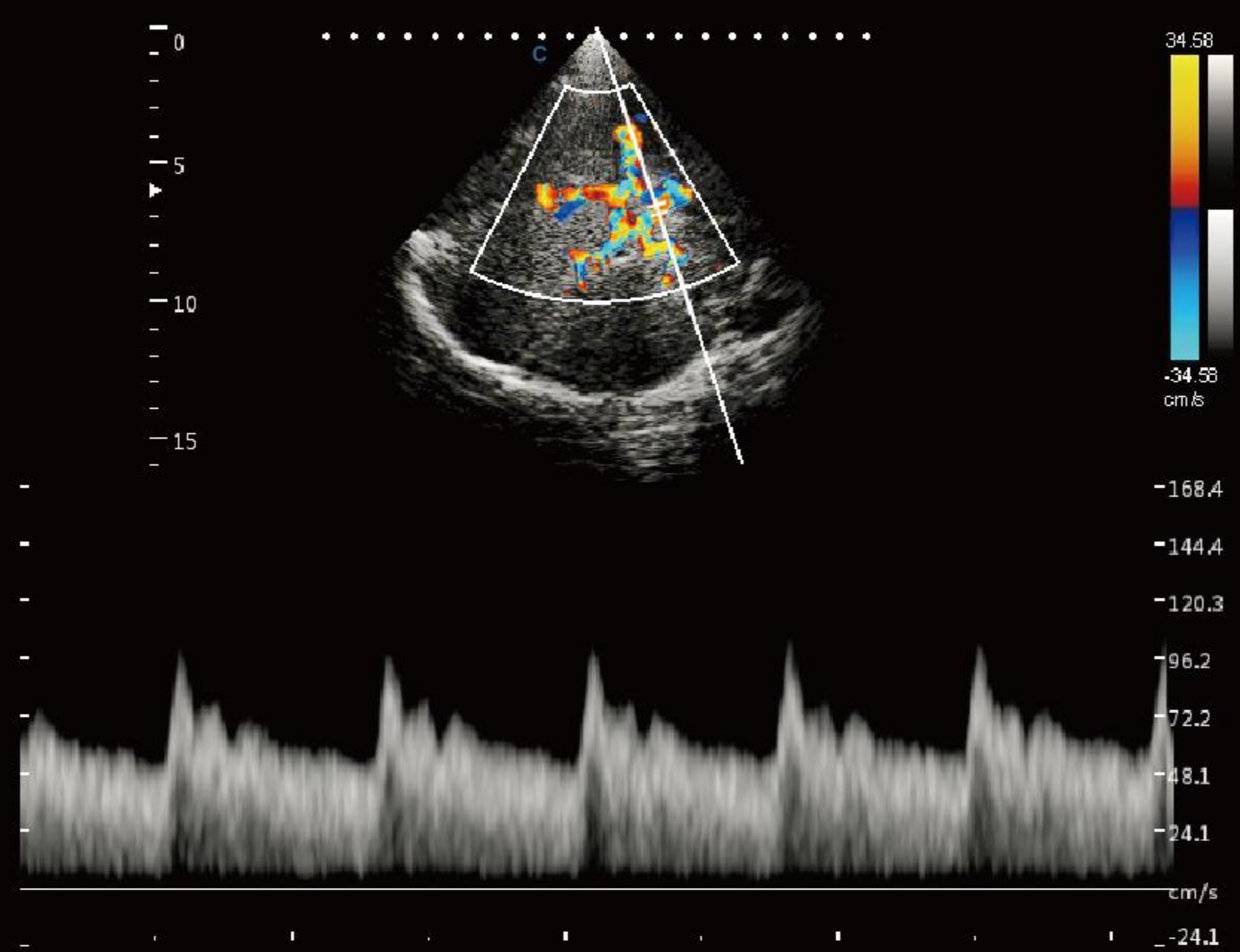
Carotid Plaque, C Mode



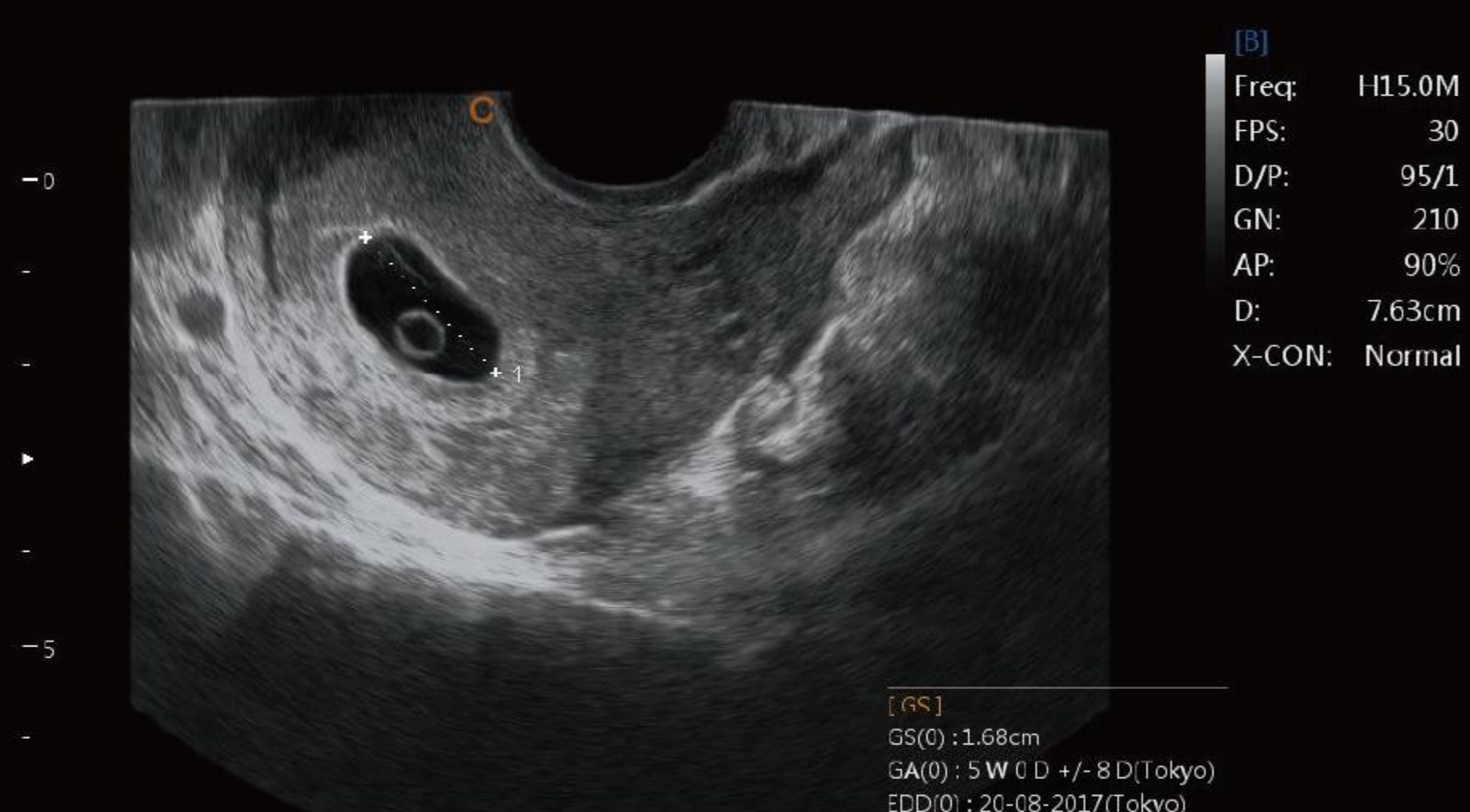
Follicles, B Mode



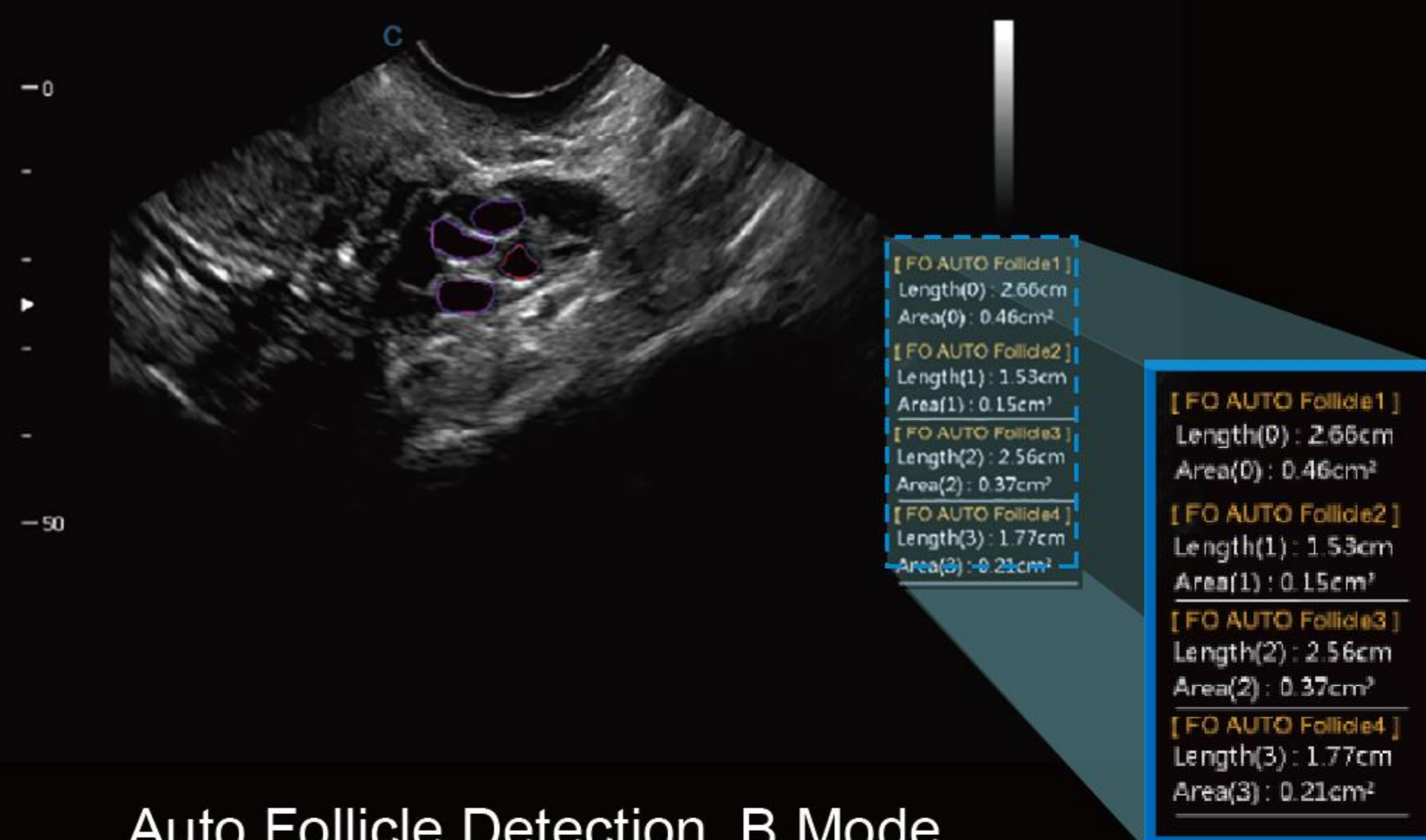
Fetal Face, Virtual HD



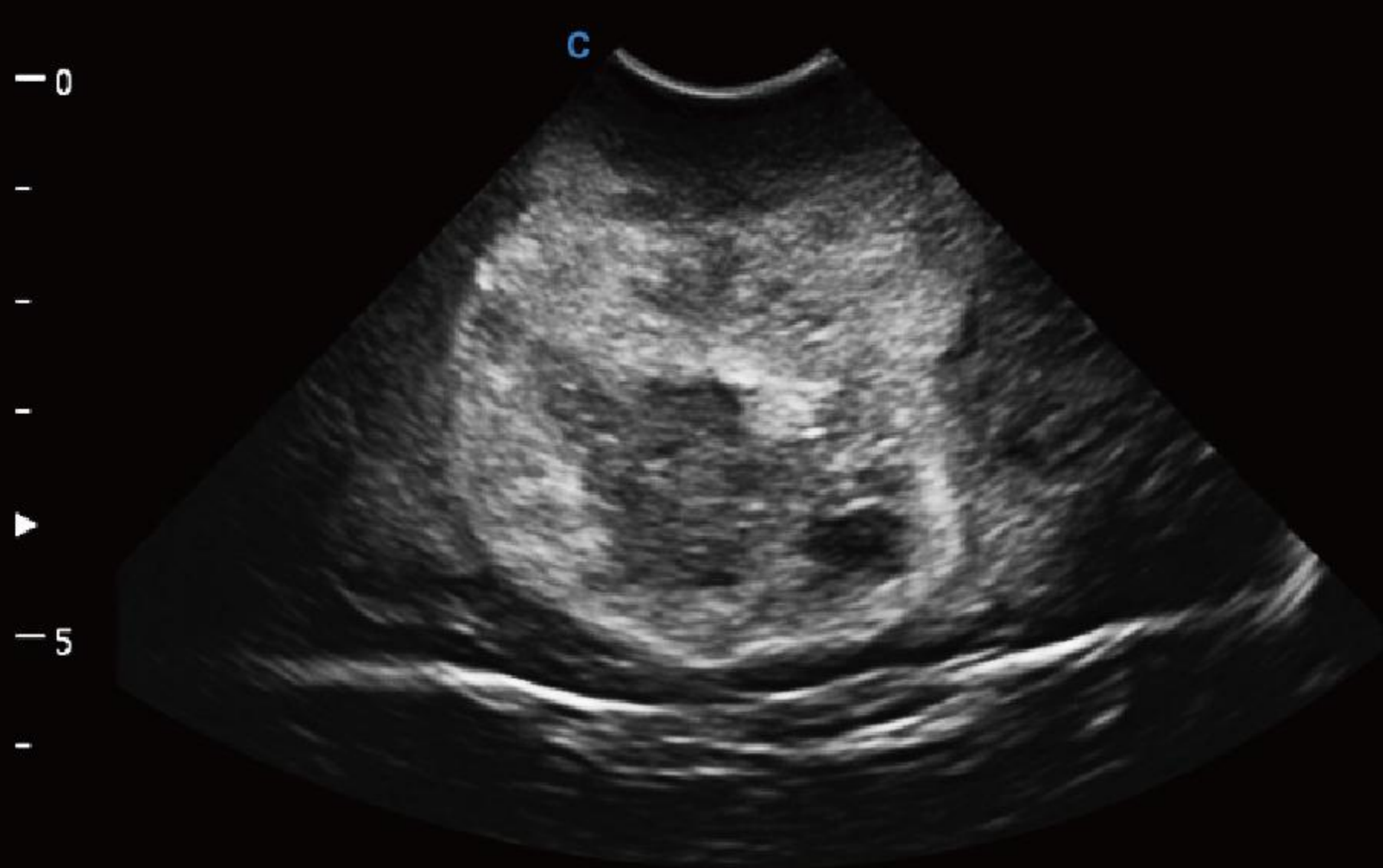
Transcranial, PW Mode



Pregnant Bursa, B Mode



Auto Follicle Detection, B Mode



Pediatric Cerebral Tumor, B Mode



Hydronephrosis, B Mode



WIDE VARIETY OF TRANSDUCERS



Convex
D3C60L



Linear
D12L40L



Linear
D7L40L



Volume
V4C40L



Transvaginal
D7C10L



Phased array
D3P64LS



Phased array
D3P64L



Phased array
D5P64L



Trans-Rectal
D7L40L-REC



Micro-Convex
D6C15L



Linear
M8L40L



Linear
D10L30L

CHISON Medical Technologies Co., Ltd.

Sales & Service Contact Address: No.3, Changjiang South Road, Xiwu District, Wuxi, Jiangsu, China 214028

TEL : 0086-510-85310937 **FAX :** 0086-510-85310726 **EMAIL :** export@chison.com.cn

We reserve the right to make changes to this catalogue without prior notice. All rights reserved.
Please contact our local dealer for the latest information.