

CHISON
Value Beyond Imaging



SonoAirTM 30 VET

Redefine the Future of Portable Ultrasound



SonoAir™ 30 VET

SonoAir 30 VET: Redefining the Future of Veterinary Ultrasound. CHISON's years of expertise, advanced algorithms, and meticulous ergonomic design ensure maximum efficiency, making it the ultimate tool for compassionate and precise animal care. Elevate your veterinary practice with cutting-edge technology and unwavering dedication to animal well-being.



Ultra -Fast

- Boot up in 25s.
- Can be shut down in 3s.
- Awake the system in 3s.

2.1kg

26mm



Ultra -Portable

- World's thinnest and lightest portable ultrasound system weighing **2.1kg**, boasts a width of **26mm**.
- Robust aluminium body increases the durability.

36h+
standby

180
minst+
scanning



Ultra -Green

- CHISON holds it's position clear "Save Power, Save Environment".
- Scanning for **180minst+** in a single charge.
- **36h+** on stand-by mode guarantees a more reliable diagnosis.



3D Ultra - Approachable

- Innovative and interactive **3D UI/UX**
- Increased efficiency and diagnostic confidence.

More than Portable

Seamless Transformation from Portable to Cart-Based

Ultra - Connectable

- Live **4** probe ports bring a quick shift between different clinical scenarios.
- Designed to cater all applications & bring complete solutions for your imaging.



Ultra - Flexible

- Dedicated trolley with height adjustable.
- Featuring **4** transducer connectors, SonoAir can seamlessly transition into a cart-based ultrasound system.



Bag



Ultra - Touchable

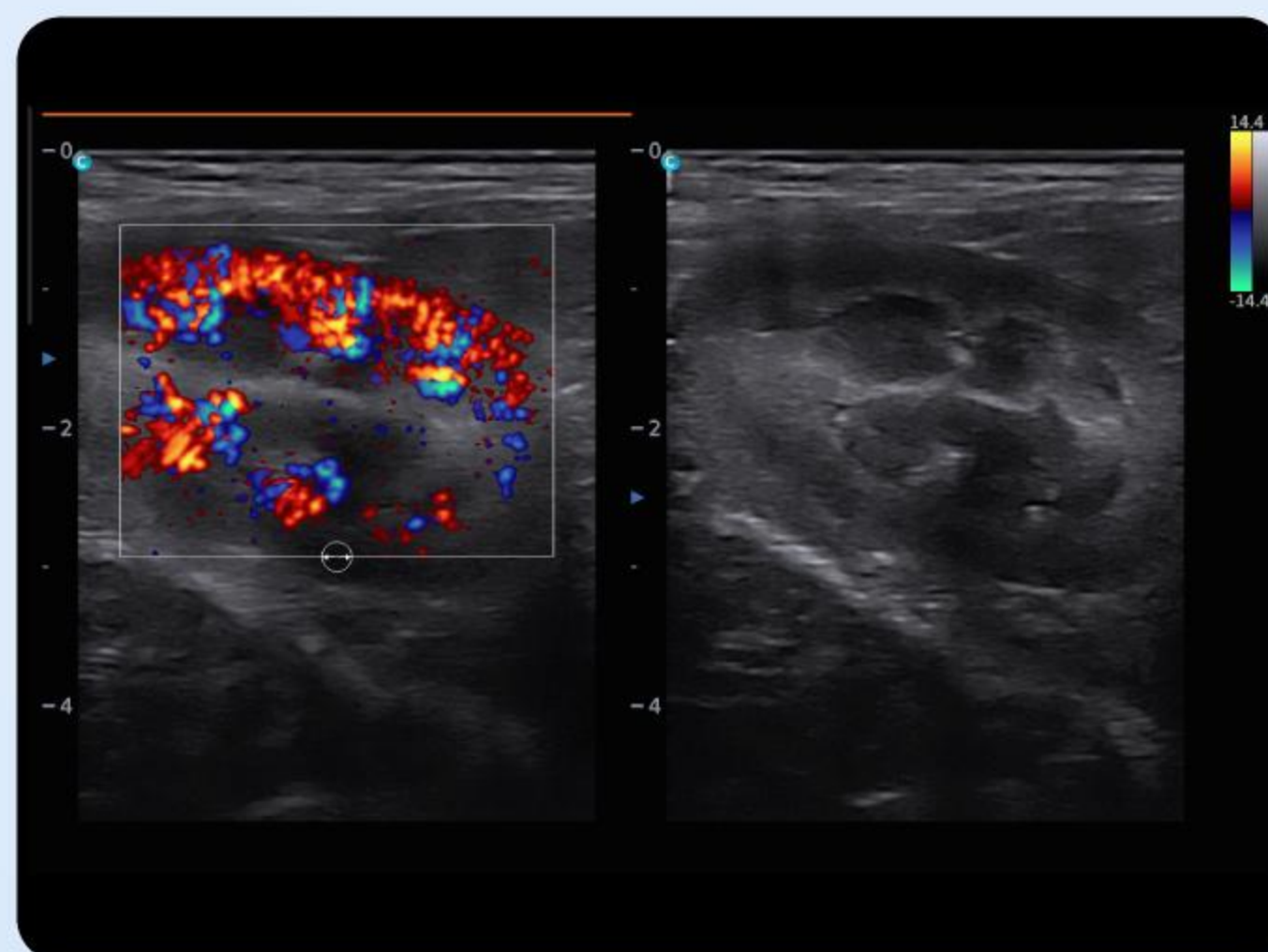
- 14.1" of touchscreen with highly sensitive gesture control makes ultrasound imaging a new experience and reduces key strokes.
- Built-in trackpad promises comfort and ease of use.
- Unique finger print lock delivers the promised data protection and safety.



Premium Image Quality



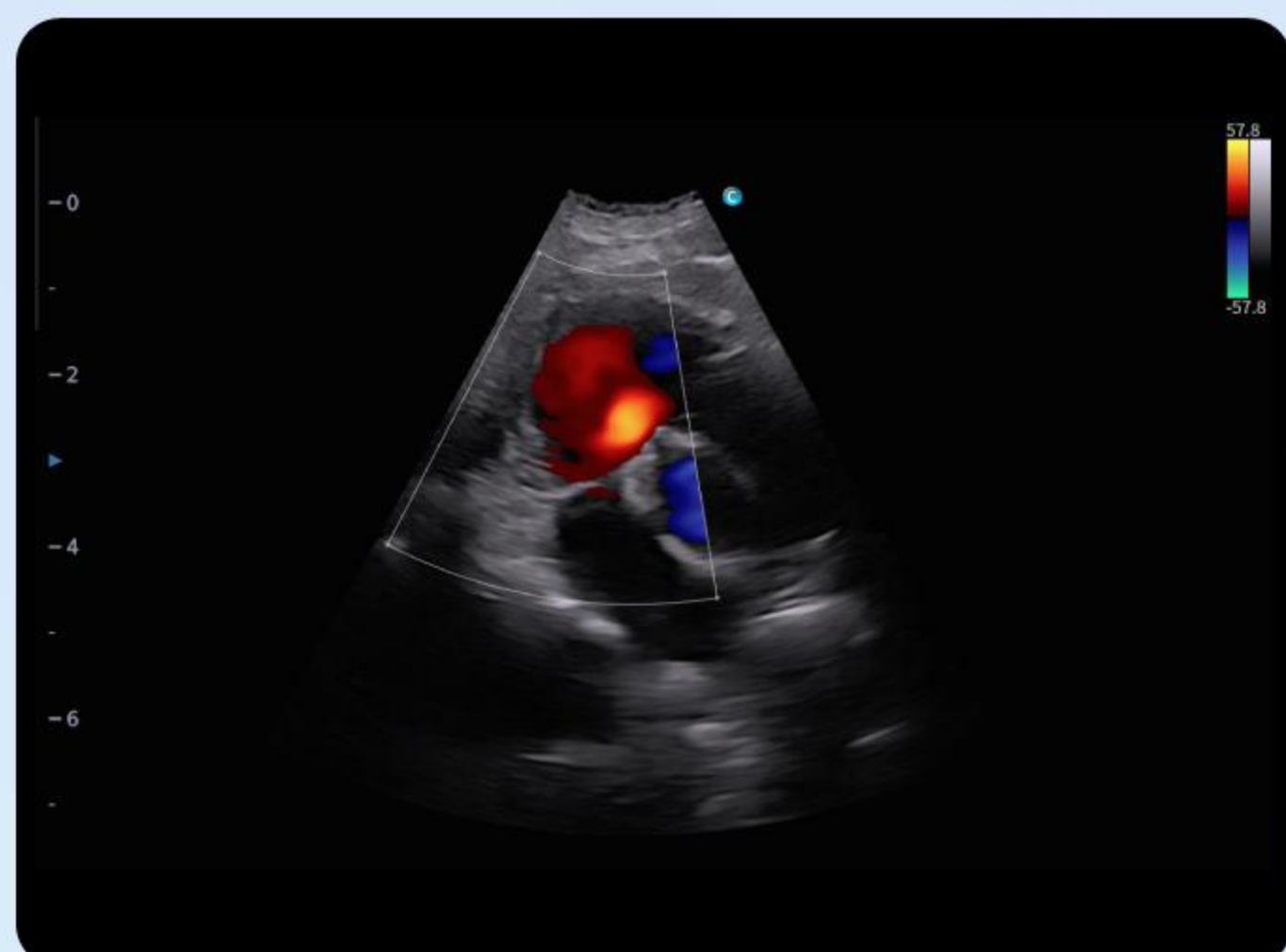
Canine, Artery



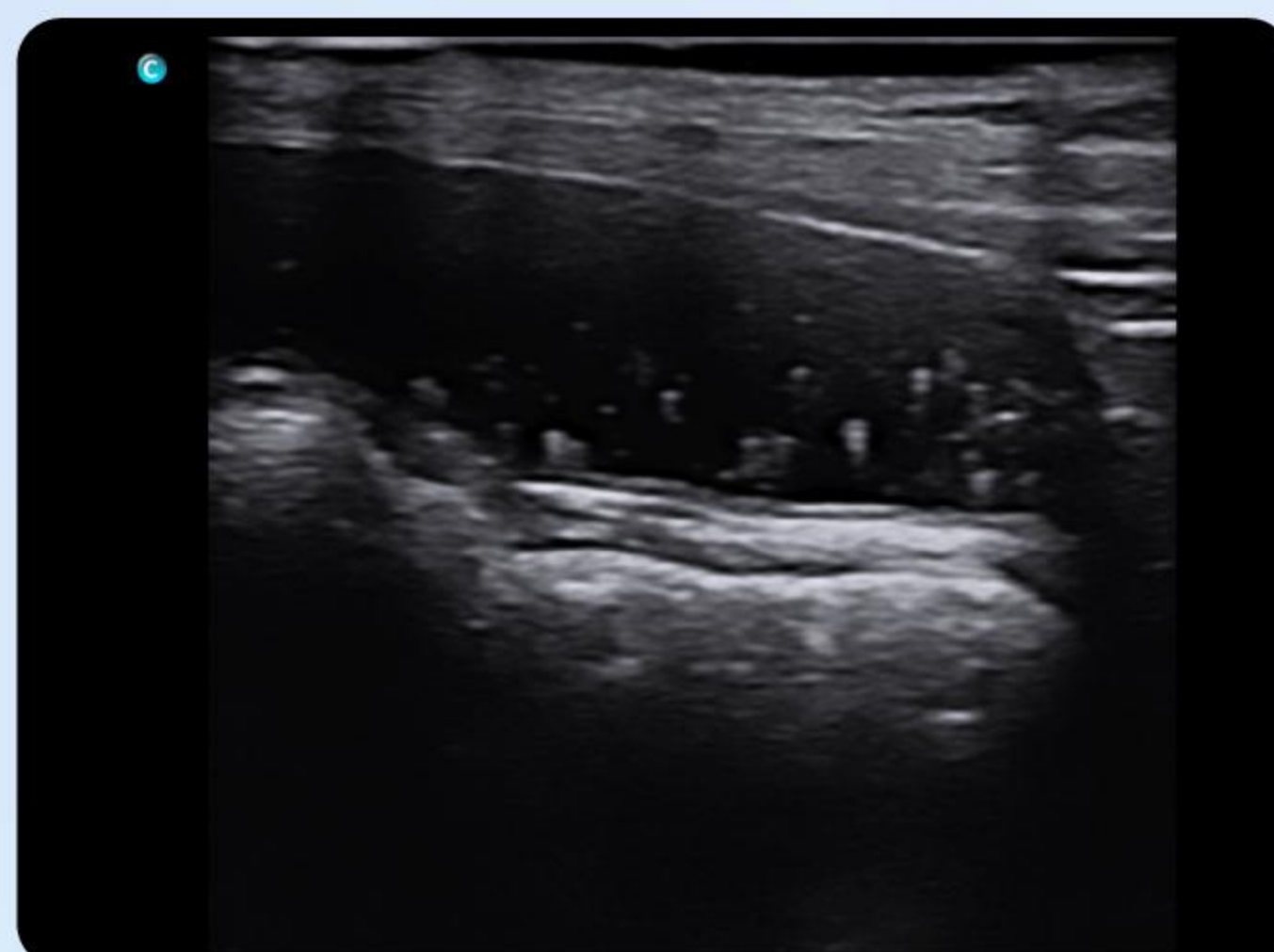
Canine, Kidney



Canine, Kidney



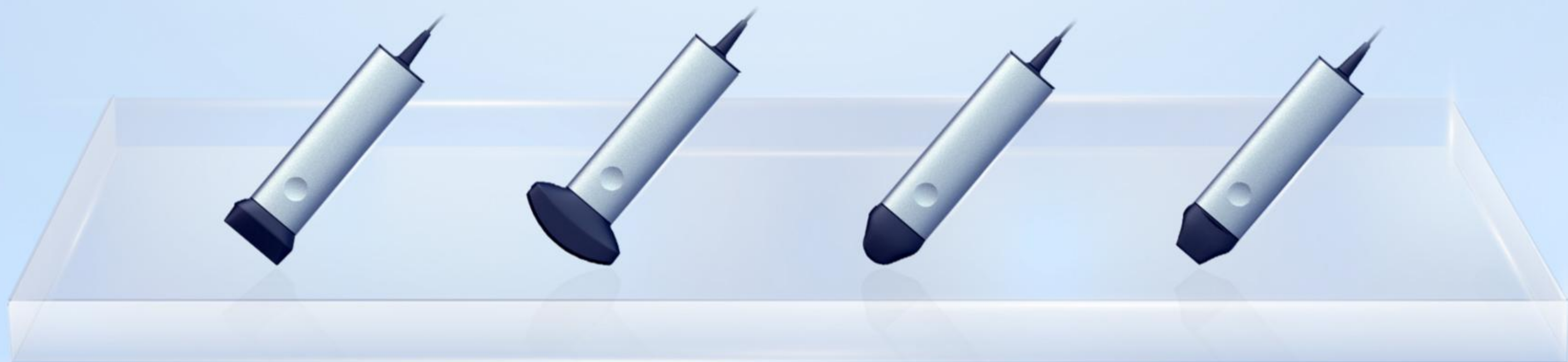
Canine, Cardiac



Canine, Bladder



Canine, Spleen



7L

Linear
7.5MHz

3C

Convex
3.0MHz

6MC

Micro-convex
6.0MHz

3S

Phased Array
2.5MHz

CHISON Medical Technologies Co., Ltd.

Sales & Service Contact Address: No.3 Changjiang South Road, Xinwu District, Wuxi, 214028 Jiangsu, P.R. China.

TEL : 0086-510-85310937 **FAX :** 0086-510-85310726 **EMAIL :** export@chison.com.cn

We reserve the right to make changes to this catalogue without prior notice. All rights reserved. Please contact our local dealer for the latest information.



CHISON FaceBook
Follow CHISON's Social Media
for the Latest Updates!