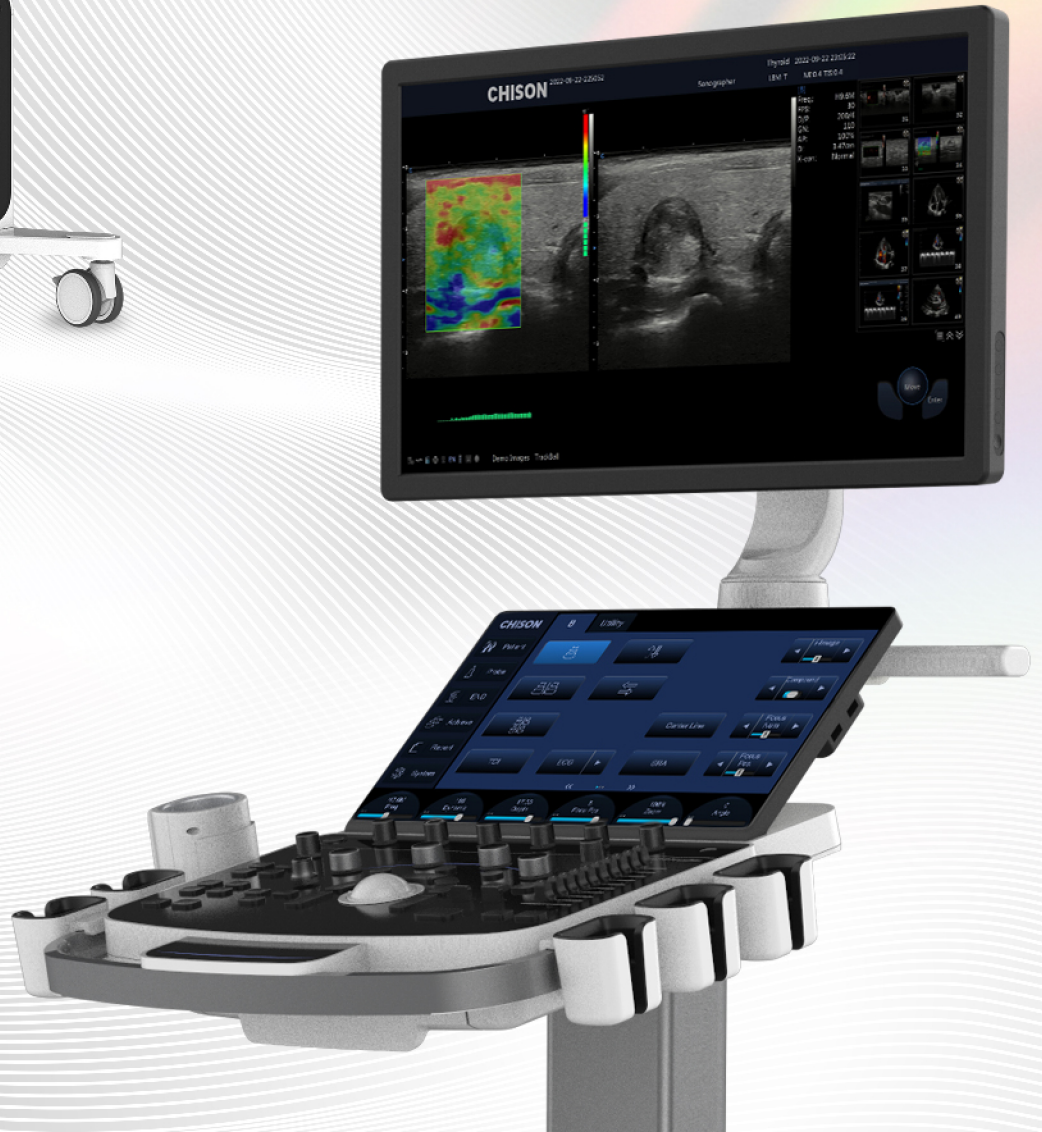


**CHISON**  
Value Beyond Imaging

# SonoMax 9™

Premium Imaging for Exceptional Healthcare





**CHISON SonoMax 9** a top-of-the-line cart-based ultrasound system that embodies a perfect blend of style and functionality. Designed with an unwavering attention to detail, its sleek and ergonomic design offers both comfort and exceptional performance. SonoMax 9 delivers the accuracy and versatility medical professionals need to provide the best possible patient care. With its advanced features and intuitive interface, CHISON SonoMax 9 sets a new standard for premium ultrasound systems.

### **MAX** Clarity

FHI+ employs advanced digital signal processing algorithms to significantly improve both resolution and penetration.

### **MAX** Precision

Fine-tune transmit waveforms for multi-frequency energy distribution and precise receive frequency control for image uniformity and contrast resolution.

### **MAX** Performance

Coherence beamforming technology improves SNR via digital signal processing, optimizing signal path, reducing noise, and enhancing signal.



# PREMIUM DESIGN



23.8" large size HD LED screen for higher clarity



15.6" Angle adjustable touch screen

12° tilt keyboard for extreme comfort



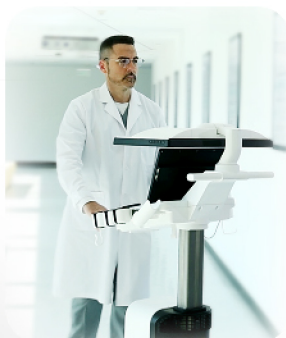
Bigger trackball make control with ease



Pinless Port  
5 Transducer Connectors with Stylish Lights



Flexible height adjustment with 20CM lifting range



*Ease of transportation*



*Innovative service solution*

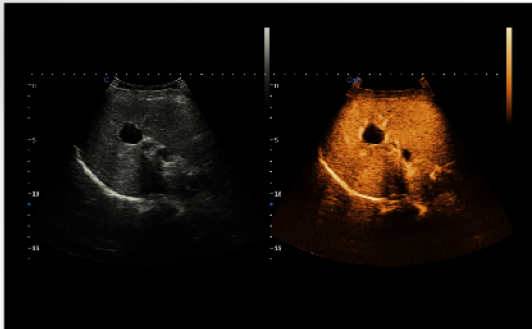


# GENERAL



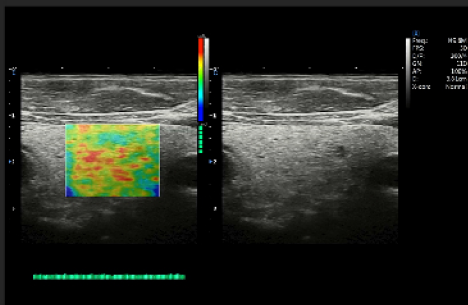
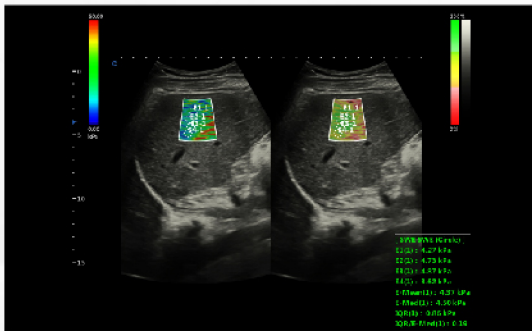
## SonoContrast

- Developed to visualize the micro-circulation in tissue, that is, the blood flow in imperceptible blood vessels.
- Potentially be used to improve diagnosis and therapy in several clinical situations.
- More sensitive, better performance.



## Shear Wave Elastography

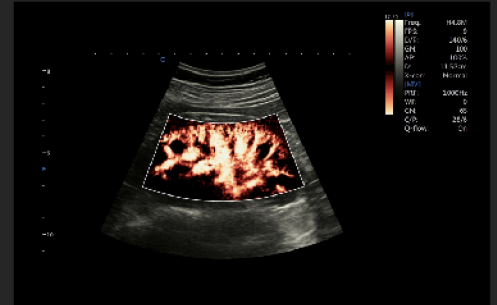
- P-SWE point shear wave imaging, high precision singlepoint measurement, higher penetration.
- 2D-SWE surface shear wave imaging, real-time two-dimensional measurement to obtain more diagnostic information.
- The system can provide variety of quantitative analysis parameters, such as velocity values, Young's modulus and so on.



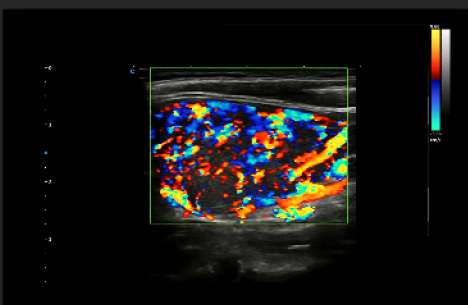
Thyroid, Elastography



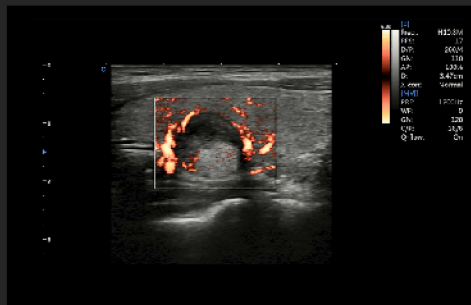
Pleural and Abdominal Effusion



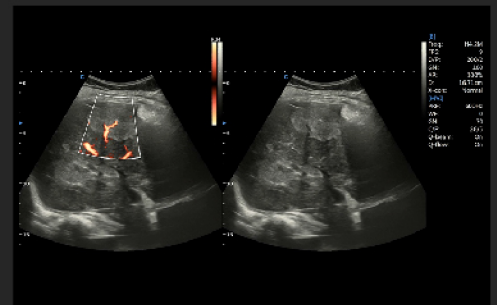
Kidney, MVI



Hyperthyroidism, C Mode



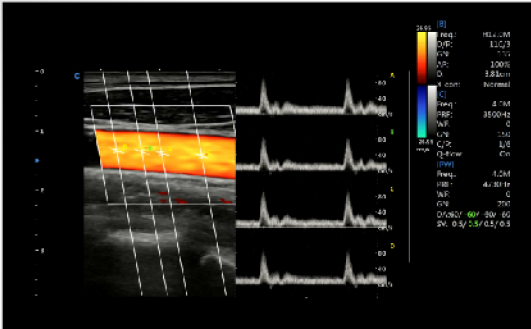
Thyroid Nodule, MVI



Liver, MVI

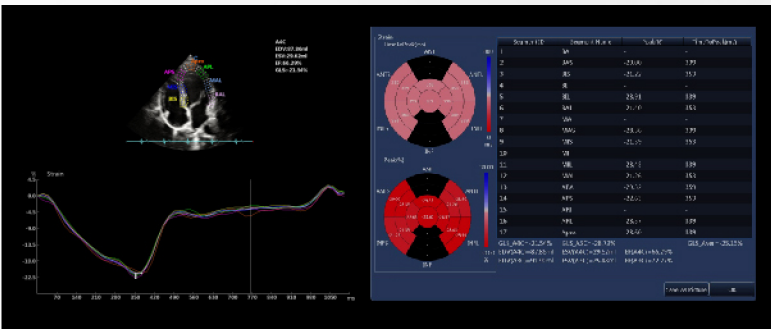


# CARDIOVASCULAR



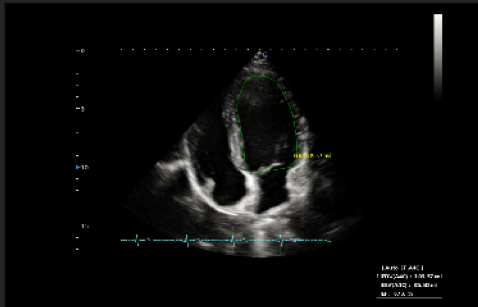
## SonoPW

- The sample gate can be extended to 4 during PW mode.
- It can switch and active each sample gate to realize multi-point spectrum measurement in the same cardiac cycle at the same scanning plane ; Support synchronous display of spectrum and speed value.

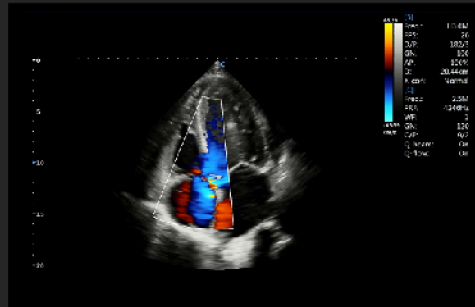


## Strain and Strain Rate

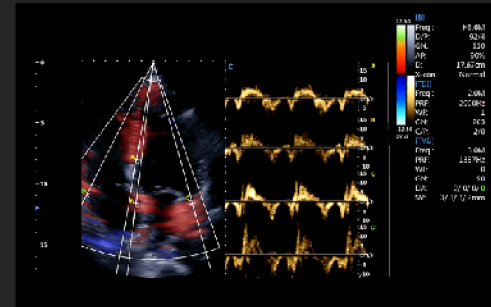
- A new non-invasive method for assessment of myocardial function.
- Ability to differentiate between active and passive movement of myocardial segments, to quantify intraventricular dyssynchrony.
- To evaluate components of myocardial function.



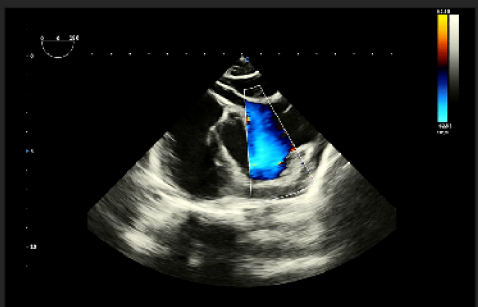
A4C, Auto EF



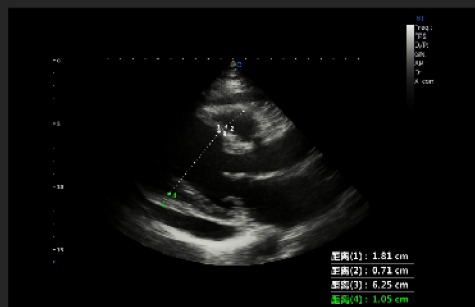
Four Chambers View, C Mode



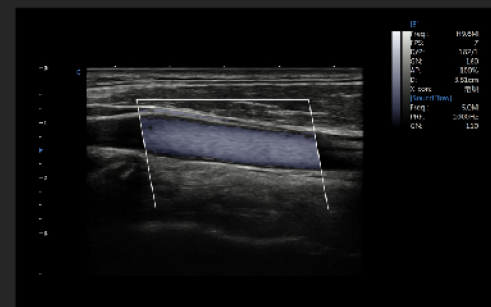
TDI-SonoPW



TEE



Pericardial Effusion



SoundFlow

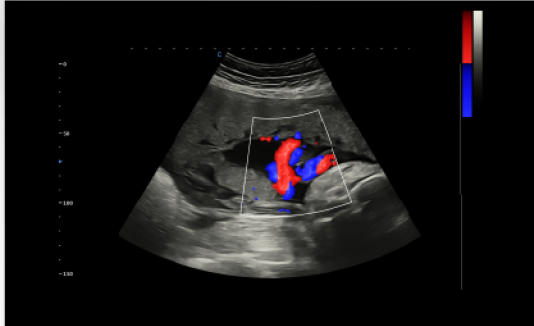


# WOMEN'S HEALTHCARE



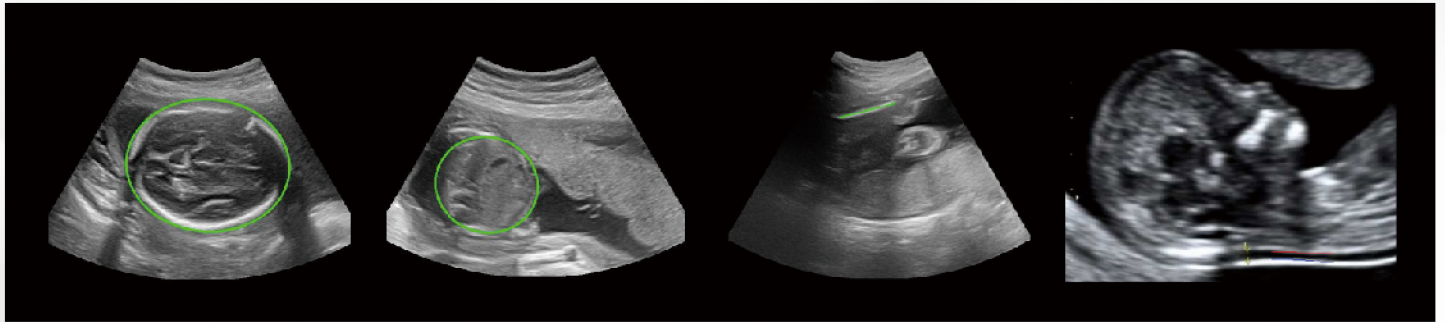
## Volume Flow

- A three-dimensional technology which can provide the real-time visualization of hemodynamics blood flow with a density appearance.



## Sono - OB

- Automatically measure: BPD, HC, AC, FL, NT.
- Efficiency and accuracy.



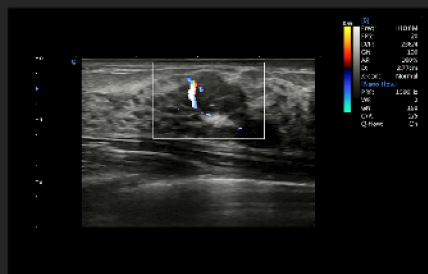
Fetal Face, Virtual HD



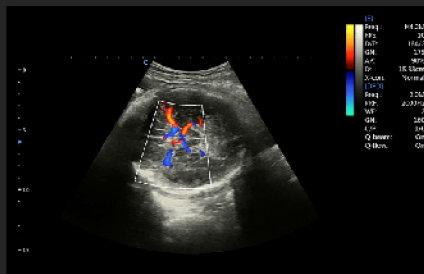
Fetus Abdomen, B Mode



Fetus, B Mode



Breast Nodule, NanoFlow



MCA, C Mode



Uterus , 210°



# PREMIUM VERSATILITY

## Convex Probe:



## Phased Array Probe:



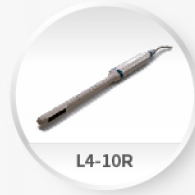
## Linear Probe:



## Trans-vaginal Probe:



## Trans-Rectal Probe:



## Volume Probe:



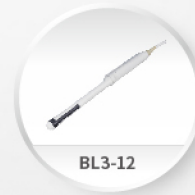
## Micro Convex Probe:



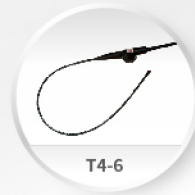
## Pencil Probe:



## Bi-plane Probe:



## TEE Probe:



# SonoFamily

*Re-Think, Re-Define, Re-Build, Re-Educate the Future of the Ultrasound*



**SonoEye™**



**SonoMax™**



**SonoAir™**

CHISON Medical Technologies Co., Ltd.

**Sales & Service Contact Address:** No.3, Changjiang South Road, Xinwu District, Wuxi, Jiangsu, China 214028

**TEL:** 0086-510-85310937 **FAX:** 0086-510-85310726 **EMAIL:** export@chison.com.cn

We reserve the right to make changes to this catalogue without prior notice. All rights reserved.  
Please contact our local dealer for the latest information.